



METER DEVICE DISCONNECT SLEEVES

PRODUCT DATA SHEET

Provides electric utilities with a quick, safe, and economical option to temporarily disconnect electrical service while leaving the meter on-site.

FEATURES

- Extended flaps on end of sleeve for added protection
- Insulates the jaw from other live parts while allowing for easy removal during reinstallation
- Fits all manufacturers' meter blades
- High dielectric strength
- Water-resistant and moisture-proof

SPECIFICATIONS

- 8 mil lay flat PETG polyester plastic
- Melting Point: 250° C
- Dielectric Strength: 3250 V
- Dimensions:
 - Length: 1.437 inches
 - Width: 0.888 inches
 - Thickness: 0.008 inches

PACKAGING

- Master Pack of 144 (6 envelopes, 24 sleeves per envelope)

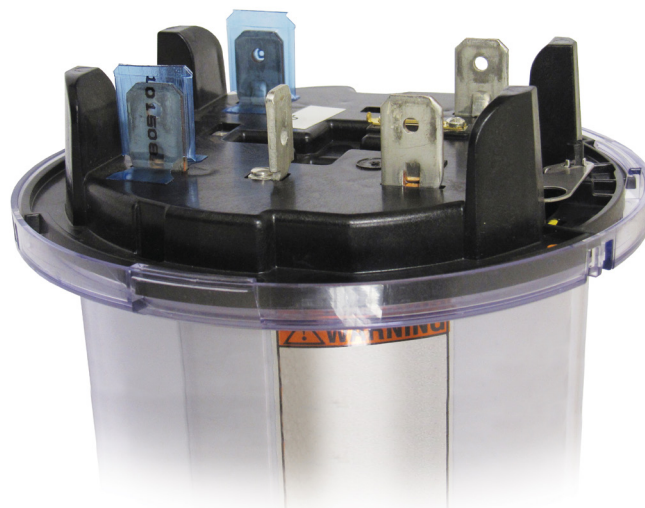
APPLICATIONS

For use with standard bladed electric meter socket.

NOTES

One-time use only.
Do not use in sleeves on lever bypass sockets.
Fully seat sleeve on blade to prevent tearing.
For adequate performance, protect from moisture, extreme temperatures, and contamination. If exposed, discard the sleeve.

MODEL # 600-MDDS



43045 West 9 Mile Rd.
Novi, MI 48375
1.888.687.3008
brooksupility.com
Version 6.11.2024

