



SEALS AND LOCKING DEVICES

Since 1873, Brooks Utility Products has engineered solutions with one goal in mind: securing utility assets and protecting revenue. With over 150 years of innovation, we understand that every unprotected meter is a potential point of revenue loss. While digital security is important, it's vulnerable without physical protection.

Our locking and sealing products are the essential first layer, providing immediate, visible evidence of tampering and preventing the physical access required for most meter attacks. We enhance this security with advanced customization, including laser-engraved barcodes and sequential numbering. This technology creates a robust defense against counterfeiting and seal substitution, providing a verifiable audit trail crucial for any revenue assurance initiative. Finally, our unwavering commitment to quality means you can trust Brooks Utility Products to protect your bottom line.

This catalog contains the tools to fortify your metering infrastructure. Let us help you turn your security vulnerabilities into protected revenue.

Explore our full range of revenue protection solutions at www.brooksutility.com or contact us at sales@brooksupg.com.

WHERE TO FIND...

SHORT-TERM SEALS 3

LONG-TERM SEALS - ENDURO 4

LONG-TERM SEALS - PLASTIC PADLOCK 4

LONG-TERM SEALS - WIRE AND CABLE 5

BARREL LOCKS AND KEYS 6

BARREL LOCK ACCESSORIES 7

SEALING RINGS 8

LOCKING RINGS 9

HARDENED LOCKING DEVICES 10

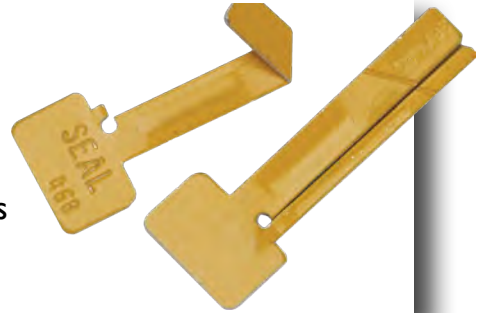
GAS AND WATER LOCKING DEVICES 12

OUR PRODUCT PORTFOLIO 13

SHORT-TERM SEALS

Multibar Seal

An aluminum seal designed for quick installation. Ideal for use on all demand reset mechanisms and is self-destructing if tampered with. It is available in a variety of colors to ensure monthly identification and can be stamped with company initials and consecutively numbered.



BT Aluminum Meter Seal®

The BT Meter Seal® is a security device for sealing electric meter back plates which requires no tools to install or remove. The base is stamped “SEALED” and the seal is scored to fracture if unauthorized entry is attempted. Up to four letters can be stamped on the flag, with the option of stamping on both sides. Available in plain aluminum, anodized, green, and blue.



Spring-Lok® Seal

A tamper-evident seal designed for electric meter demand reset mechanisms. It is applied with one hand and removed by breaking its spear with a simple twist. Available in a variety of colors with company name and a seven-digit identification number.



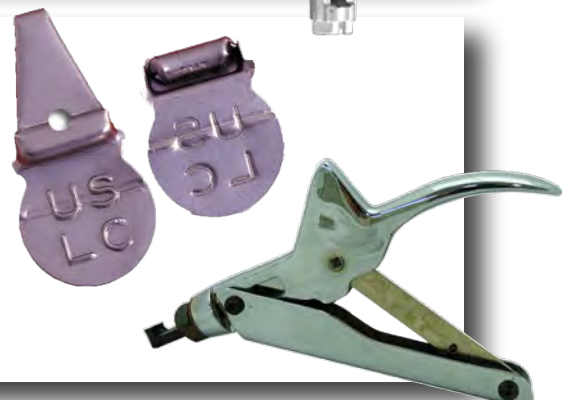
Opti-Lock®

Prevents unauthorized access to metering data. Safeguards ports from the environment. Easy to install and seal with long-term, demand or cable lock seals.



ProngLok Pro4 Seal®

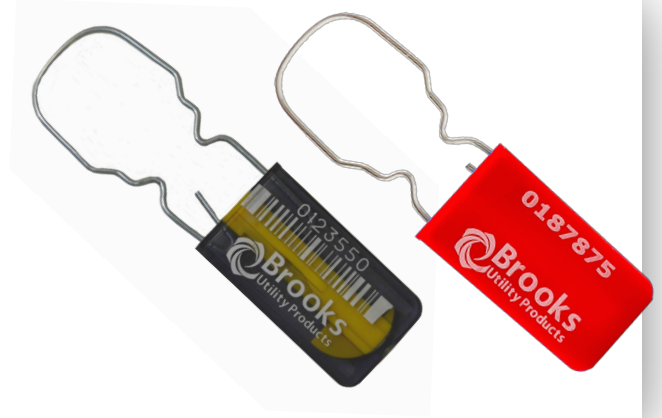
The ProngLok Pro4 Seal® is a metal “crimp” seal used in conjunction with a wire and secured with a sealing tool. Once crimped, the wire cannot be removed without being cut or destroying the seal. A large flag provides room for embossed information. Easy to install and use, it is available in aluminum or zinc coated steel. ProngLok® sealing tool is required for installation.



LONG-TERM SEALS - ENDURO

Enduro® Seal

Brooks' Enduro® series is constructed of durable acrylic plastic and designed to provide long service life in harsh environments. Should tampering attempts take place, inclined ramps on the insert force the wire legs to break out of the body, providing visible evidence. Choice of solid body and contrasting color insert, or transparent body and colored insert. Seals are laser engraved with company identification, sequential numbering or barcoding; square body available.



LONG-TERM SEALS - PLASTIC PADLOCK

Plastic Padlock Seal

These seals have a polypropylene UV inhibitor body and are available in a choice of galvanized or stainless steel straight hasps. Offered in a wide variety of colors, they can be cold or heat stamped with company name or logo and consecutively numbered. Plastic padlock seals can also be supplied with the caduceus emblem for medical related applications.



SecurHasp II®

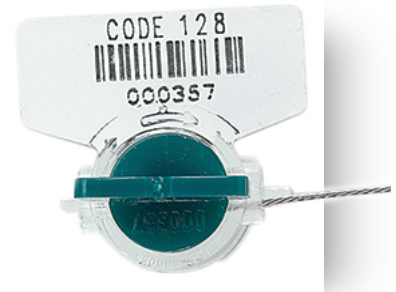
This seal features a tamper indicative channel and a special hasp configuration that deters access by picking tools. Available in a variety of colors, it is heat stamped for easy reading with alphanumeric characters and seven consecutive numbers for identification and control.



LONG-TERM SEALS - WIRE AND CABLE

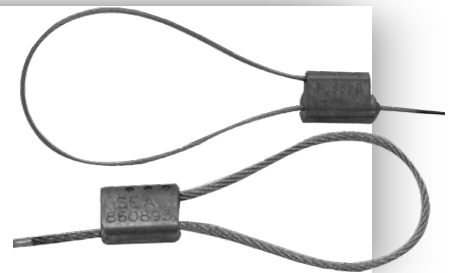
Toolless Roto Seal®

Made from durable acrylic plastic with a transparent body and colored insert, this seal requires no tool. An integral tab on the insert is twisted to rotate the wire around the insert. A large flag is featured, which can be personalized with a company name or logo and consecutively numbered. Laser etched barcoding available in Interleaved 2 of 5, Code 3 of 9, or Code 128.



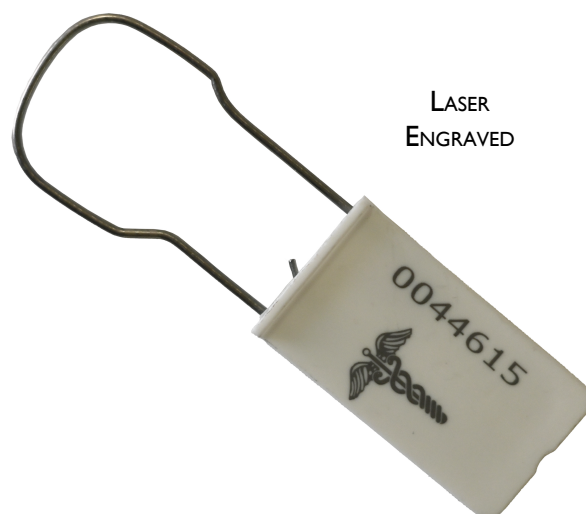
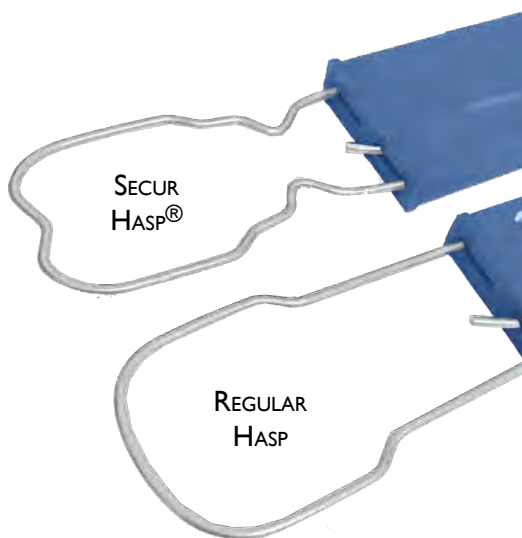
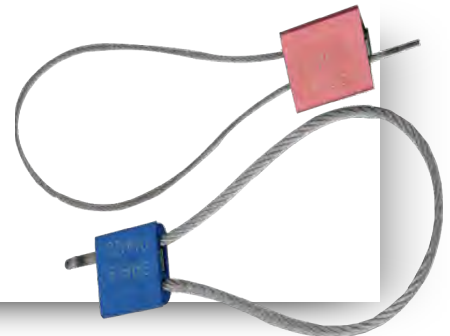
E Z Lok®

A medium-duty seal featuring galvanized, non-preformed security cable which frays when cut to indicate tampering. Standard lock body is constructed of corrosion-resistant cast zinc, available in non-ferrous for flammable environments.



Flex Secure®

This tamper-evident cable seal separates into individual strands when cut, and cannot be resealed. The seal body is constructed of aluminum alloy and provides added durability over plastic bodied seals yet maintains color and customized identification. Standard galvanized cable with optional barcoding available.



BARREL LOCKS AND KEYS

BARREL LOCKS & KEYS are used in conjunction with various locking devices and are only available to utility companies. Compatible with most competitive locking devices, barrel locks can immeasurably add to the security of a utility.

A choice of four levels of security are available: F, G, and S1000 Series. Heavy-duty keys that operate barrel locks can be numbered for tracking and accountability and are shipped with a protective cover. Field repairable keys are available for each of these series.

Model F Series

The F Series barrel lock system is our standard design security lock for utility metering locking devices. Available in case-hardened or stainless steel and with an optional weather seal. Interchangeable with standard locks from other manufacturers.



Model G Series

The high security G Series is available in three non-interchangeable barrel lock combinations: G1, G2, & G3 - each with geographic exclusivity for enhanced security. The G1 & G2 series are made from case-hardened or stainless steel. The G3 series locks are made from stainless steel only. Unique plunger design is virtually pickproof.



Model S-1000 Series

The high security S-1000 series offers progressive levels of security coupled with account-specific exclusivity. Its unique design permits a one key system. All internal components are stainless steel. The lock bodies are available in stainless steel or cadmium-plated hardened steel. The S-1000 system design offers superior tamper deterrence.



BARREL LOCK ACCESSORIES

Barrel Lock Cleaning Tool

Clear bugs, dirt and debris from the barrel lock body. Comes complete with key ring attached.



Barrel Lock Puller

The clamshell style barrel lock puller grips tightly around the head of a barrel lock to remove troubled locks. Using an Allen wrench, tighten the end of the puller around the head of the lock. Then use a wrench to turn the nut on the rear of the puller, which pulls the lock out of device in which it was installed.



Barrel Lock Guard

A case-hardened and plated steel device mounted on the cover of a ringless meter box to protect the barrel lock from attack. Used with an angle bracket mounted inside the box. Two holes must be drilled to install these devices. An O-ring can be added to provide watertight integrity, and mounting templates are available to help position drill holes.



Plastic Cap for Seal Adapter

Deters tampering of barrel locks within a locking device and protects barrel locks from environmental debris. Colors available: red, gold, and clear.



SEALING RINGS

Slip-Lock Sealing Ring

Constructed of a stainless band, the Slip-Lock Sealing Ring provides an easy, tool-free installation. The front wall of the band is smaller than the back, putting pressure on the meter cover when tightened. Ring properly marked with forward orientation.



Handi-Ring®

This Handi-Ring® is quick and easy to install. Its zinc sealing hardware provides four times the sealing options of other screw-type rings. Made of heavy-duty stainless-steel, the ring effectively resists corrosion. This innovative ring is installed using a 5/16" finger-grip screw which enables it to be hand tightened. It is reversible for left hand installation. An E Z Lok® cable seal can be used for identification and increased security.



LOCKING RINGS

Redi-Ring

This ring is a one-piece, front entry, locking ring with an optional steel or plastic seal adapter. Scalloped rear flange promotes easy application and higher security by eliminating pry points. Available in stainless steel, it can be used on most individual residential sockets and multiple apartment meter panels. A barrel lock is required to secure this device.



Click Ring

This high security stainless steel meter ring features a built-in barrel lock. No key is necessary for installation. Once the ring is positioned around the meter, simply press the blade into the housing. When you hear an audible click, the ring is locked. A key is required to open the ring. Available with F and G Series built-in barrel locks.



HARDENED LOCKING DEVICES

S-Shaped T-Slot Adapter

Designed to secure ringless meter sockets. The seal adapter is pressed into the adapter to protect the barrel lock and provide a sealing point. The heavy-duty slotted end cap provides added security. Made of case-hardened steel with yellow chromate plating. Used in conjunction with a barrel lock, sold separately.



Brooks KP Keyless Padlock

A single-use padlock, designed to prevent unauthorized entry into energized cabinets. Offers a simple, cost-effective answer to revenue protection, and installs easily without tools. The 3/16" hasp slides into the body, allowing adjustable vertical clearance. It secures tightly and cannot be broken without a cutting tool. The two-piece assembly is constructed of corrosion-resistant zinc alloy.



Quick Pin Lock

The Quick Pin Lock is used to secure ringless meter sockets without tools for easy installation. Lock is secured using a machined pin which inserts into the chamber of a brass padlock. The pin and lock attach a hardened steel bracket that holds the cover of the meter socket in place. Bottom, side, and universal mounts available. Option to customize padlock with name or logo.



Quick Lock II®

The Quick Lock II® is a high security locking device designed to secure ringless meter sockets. The two-piece design allows for quick, easy installation, with no tools needed for installation. Body is available in composite, steel, and zinc - all resist weathering and corrosion. Hardened steel brackets available in bottom, side, and universal mounts to accommodate various ringless style meter enclosures.





GAS AND WATER LOCKING DEVICES

Water Union Nut Lock

The Water Union Nut Lock is a three component, case-hardened, plated steel assembly that encapsulates water union nuts. Available in four sizes: 5LT, 10LT, 20LT, and 25LT. Assembly secured with a barrel lock, sold separately.



Connection Nut Lock

This high-security locking device is designed to secure the coupling nut on gas meters. Made of case-hardened steel, that completely encloses the connection nut and is secured with a barrel lock. Cadmium plated for corrosion resistance. Available in the following four sizes: 5LT, 10LT, 20LT, and 25LT.



Connection Nut Seal

This should be the first line of defense to discourage tampering of connection nuts. Made of poly plastic, its mated halves install around the connection nut without tools. Access to the nut can only be gained by breaking the seal, providing an obvious sign of tampering. For gas (water) applications: 5LT (5/8"), 10LT (3/4"), 20LT (1"), 25LT (1 1/2") and 30LT (2").



Locking Pipe Plug

This cadmium-plated, case-hardened steel plug is secured with a barrel lock and prevents unauthorized use of service during meter or service piping change outs. Use with a plastic seal to indicate tampering is recommended.

For gas applications: 1/2", 3/4" and 1" sizes.
For water applications: 1" and 1-1/4" sizes.



OUR PRODUCT PORTFOLIO

Brooks Utility Products offers the most complete line of metering related products for the utility industry including:

- Meter Socket Adapters
 - A To S Adapters
 - K-Base Adapters
 - Meter Interbase Adapters
 - Form Conversion
 - Power Source Interbase Adapters
 - Distributed Energy Adapters
 - Load Management
 - Surge Protection
 - Temporary Power
 - Fiber to the Home
- Meter Sockets & Enclosures
 - Pre-Wired Meter Sockets
 - Lever Bypass Sockets
 - Transockets and Mini-Transockets
 - CT Cabinets & Enclosures
- Primary Metering Cabinets (15-35kV)
- Test Switches
 - Molded Base Test Switches
 - Compact Test Switches
 - Mini-Compact Test Switches
 - Specialty and Custom Switches
- Meter Safety Equipment
 - Disconnect/Reconnect
- Metering Accessories
- Meter Testing Equipment
 - Warm-Up Boards
 - Indoor and Outdoor Meter Farms

Don't see what you need here? Talk to us! Our innovative and entrepreneurial approach leads the industry in creating and manufacturing metering products that meet real-world needs.

Check us out online or contact us at:
www.brooksutility.com
tel: 1.888.687.3008
fax: 1.248.477.2583
email: sales@brooksupg.com
[linkedin.com/company/BrooksUPG](https://www.linkedin.com/company/BrooksUPG)



43045 West Nine Mile Road
Novi, MI 48375
1.888.687.3008
Email: sales@brooksupg.com
www.brooksutility.com