



BROOKS UTILITY PRODUCTS  
www.brooksutility.com

 **Brooks**  
Utility Products

**PRODUCT CATALOG**

# AFTER 150+ YEARS, WE'RE STILL ASKING: IS THERE A BETTER WAY?

Since our founding in 1873, an entrepreneurial spirit has been the defining force behind Brooks Utility Products. It began when Edward J. Brooks solved a practical problem by creating the first seals for the industry's earliest electric meters. This drive to meet customer needs in inventive ways continues to define us today.

This spirit is fueled by a commitment to deep customer intimacy, transforming transactional relationships into long-term partnerships that are essential for solving the industry's toughest challenges. We thrive at the critical edge—the physical interface where the digital ambition of the smart grid meets the unforgiving reality of the physical world. It is here, at this crucial connection point, that our best-in-class quality products provide the security, safety, and reliability our partners depend on.

Our legacy of innovation is built on listening to our customers and understanding their challenges, especially now as we embark on a transformational investment to expand and harden our electric grid. Today, as the grid evolves to incorporate distributed energy resources such as solar, energy storage, and electric vehicles, we are once again co-creating the next generation of metering solutions. From tamper-resistant locks and seals that provide powerful revenue protection to innovative approaches for bringing advanced communication to the point of metering, our focus remains fixed on that critical edge.

This catalog represents our current solutions, but our most important work begins with a conversation. "We Have Answers" is more than a slogan; it is an invitation to bring us your greatest challenges. Let us be the partner you trust to deliver inventive, real-world solutions where they matter most.



SAFETY



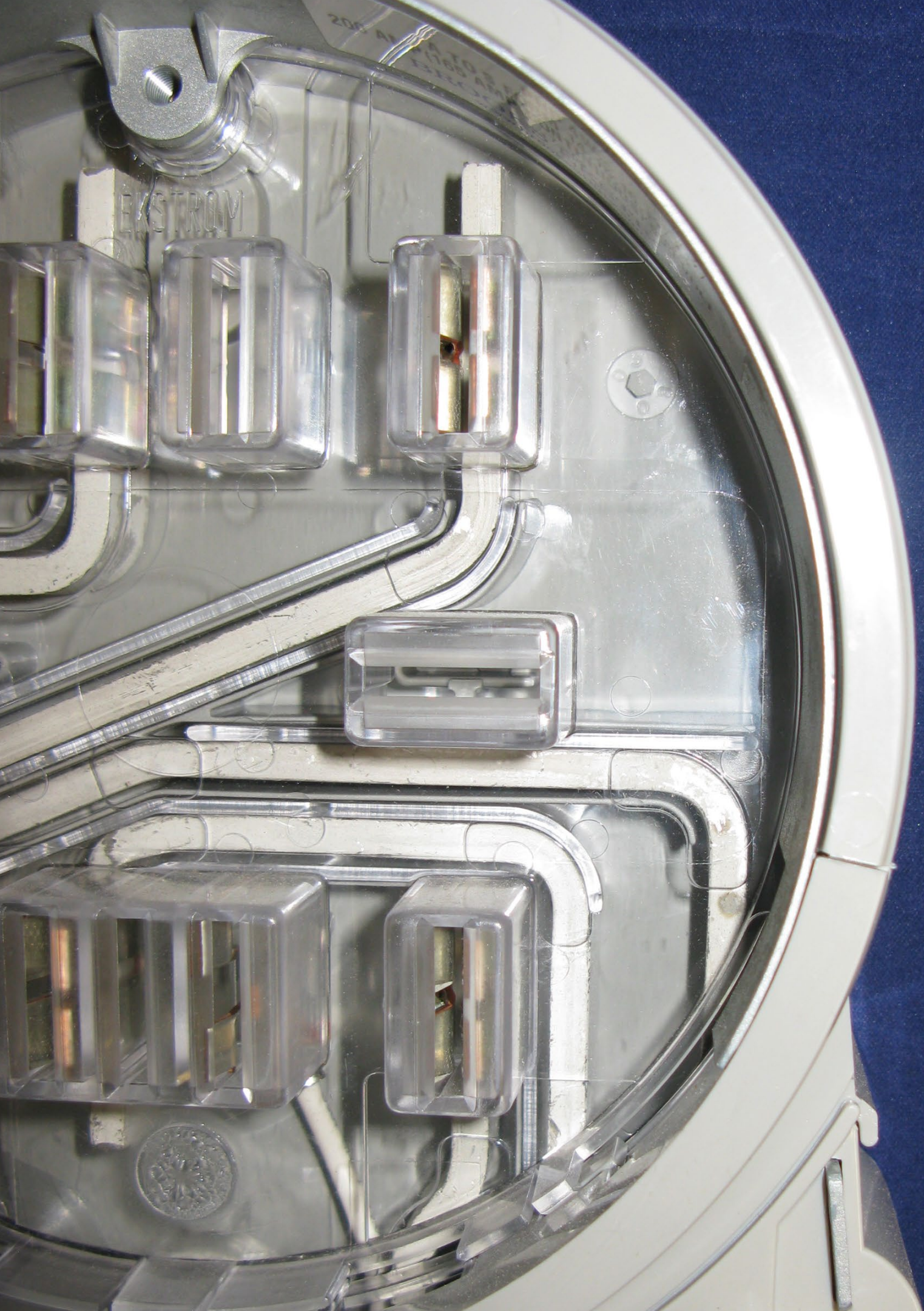
SECURITY



RELIABILITY

## WHERE TO FIND IT...

- ADAPTERS.....5**
  - A TO S CONVERSION ADAPTERS .....7
  - K-BASE CONVERSION ADAPTERS.....8
  - METER INTERBASE ADAPTERS.....9
  - METER FORM CONVERSION ADAPTERS .....9
  - DISTRIBUTED ENERGY RESOURCE ADAPTERS.....10
  - FIBER TO THE HOME (FTTH) .....10
  - LOAD MANAGEMENT/SURGE PROTECTION.....11
  - TEMPORARY POWER .....12
- METER SOCKET SAFETY AND LINE TEST EQUIPMENT.....15**
  - METER SOCKET SIMULATORS.....16
  - LINE TEST EQUIPMENT .....16
  - DISCONNECT/RECONNECT.....18
- TEST SWITCHES .....21**
  - MOLDED BASE TEST SWITCHES.....22
  - SPECIALTY AND CUSTOM TEST SWITCHES.....22
  - STANDARD SWITCH ASSEMBLIES .....23
- METER SOCKETS AND TRANSOCKETS.....25**
  - PRE-WIRED METER SOCKETS.....26
  - LEVER BYPASS METER SOCKETS .....26
  - TRANSOCKETS.....27
  - METER SOCKET ACCESSORIES.....28
  - METER SOCKET COVERS.....29
- PRIMARY METERING CABINETS .....31**
  - PRIMARY CABINETS (15-35 KV) .....32
  - ELECTRAK™ .....33
- ENCLOSURES.....37**
- LOCKING AND SEALING.....41**
  - INDICATIVE SEALS: SHORT-TERM.....42
  - INDICATIVE SEALS: LONG-TERM.....43
  - INDICATIVE SEALS: WIRE AND CABLE .....45
  - BARREL LOCKS AND KEYS .....46
  - BARREL LOCK ACCESSORIES .....47
  - LOCKING RINGS.....48
  - LOCKING ACCESSORIES .....49
  - GAS AND WATER LOCKING.....51



# ADAPTERS

Because technology changes, but your need for safety, security and reliability doesn't, Brooks offers the industry's broadest selection of adapters to address any conversion, upgrade or installation scenario. Whether you're converting to a new base form, metering to integrate solar power or electric vehicles, adding load management or simply want the safest, most enduring technology for surge protection, Brooks has the answers.

## QUICK GUIDE TO BROOKS ADAPTERS:

A to S Conversion Adapters.....	7
K-Base Conversion Adapters.....	8
Meter Interbase Adapters.....	9
Meter Form Conversion Adapters.....	9
Distributed Energy Adapters.....	10
Fiber To The Home (FTTH).....	10
Load Management/Surge Protection.....	11
Temporary Power.....	12



# Brooks Adapters

## Common Categories



### Meter Base Conversion Adapters:

This adapter connects modern "S-base" meters to older sockets (A, B, and K-base). It provides a simple, plug-in solution that avoids the high cost of replacing the entire meter enclosure or interrupting a customer's power.

**Our Portfolio:** PHD, PTR, SHD, SSD, STR, K-Base, Single-Phase Adapters

### Distributed Energy Adapters:

Allows integration of alternative energy sources to perform various functions, such as EV charging or multi-meter co-generation at the meter socket.

**Our Portfolio:** DER, 5000 Series, EK Series Solar Adapter

### Load Management and Surge Protection:

Provides customer usage control and surge protection of a metering point, diverting excess voltage spikes away from electronics to prevent instant damage.

**Our Portfolio:** Custom development per utility or OEM requirements

### Specialized Adapters:

These adapters provide test beds for new technology, continuation of niche functions that are no longer supported (3G), communication nodes, or other unique limited scope applications.

**Our Portfolio:** Custom development per utility or OEM requirements

### Power Source Interbase Adapters:

Provides a source of DC power at the meter to power equipment such as fiber optic modules, modems, or other circuitry that would otherwise require construction of additional power sources.

**Our Portfolio:** DC source – (12V 25 Watt/ 16V 25 Watt), FTTH

### Meter Interbase Form Adapters:

Allow interface between meter forms within the S base meter series, such as 3S to 9S, or 16S to 12S. This conversion from one form to another occurs at the meter socket, eliminating the need for a socket replacement.

**Our Portfolio:** LP, EK, EKD, Right Angle, EK with Slide Coupler

### Temporary Power:

Provides methods of restoring or providing power after a storm, natural disaster, or service fault until a permanent solution or repair can be implemented.

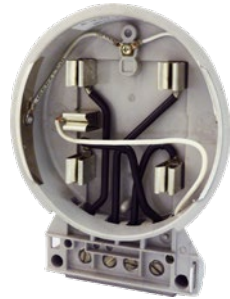
**Our Portfolio:** 700 Series, Dead-Leg Adapter, Temporary Meter Power

## A TO S CONVERSION ADAPTERS

STANDARD, HEAVY-DUTY AND TRANSFORMER-RATED

### SINGLE PHASE ADAPTERS:

#### 4900 Series Adapter (125 amp)



**MODELS**  
4900-3W (2S)

Molded from fiberglass-reinforced polyester, the 4900 series adapters provide a simple and inexpensive means for replacing single phase bottom-connected meters with modern socket type meters. Rated NEMA 3R for Indoor and Outdoor use.

#### SSD (150 amp, 125 amp continuous) STR (Transformer-Rated)



**MODELS**  
SSD-2W (1S)  
SSD-2W-5J (12/25S)  
SSD-3W (2S)  
SSD-3W-5J (12/25S)  
SSD-3W-6J (4S)  
SSD-3W-6J-6T (4S)  
STR-2W

Brooks line of standard, heavy duty and transformer-rated single-phase adapters. Features dead-front safety shield, injection molded polycarbonate construction, die-cast grounded frame with sealing ring bonding tabs, and larger terminal collars. Adapters are rated NEMA 3R for indoor and outdoor use and most models are UL listed.

#### SHD (200 amp, 165 amp continuous)



**MODELS**  
SHD-3W (2S)  
SHD-3W-5J (12/25S)  
SHD-3W-6J (4S)  
SHD-3W-6J-6T (4S)

### POLYPHASE ADAPTERS:

#### 1402 (65 amp)



**MODELS**  
V1402-3W (2S)

Designed to install single phase socket type meters on bottom-connected overall sheet-metal enclosures where the lowest profile is important.

#### PTR (30 amp)



**MODELS**  
PTR-K (5S)  
PTR-N (6/9/10S)

Brooks patented Polyphase Transformer Rated A to S adapter (PTR) with dead-front safety shield can accommodate the latest meter-cabling requirements.

The PTR features the industry's best terminal block design and unitized surge-ground frame.

#### PHD (200 amp, 165 amp continuous)



**MODELS**  
PHD-4W (14/15/16/17S)  
PHD-NETWORK/3W-B (12S)

Brooks patented, self-contained Polyphase Heavy-Duty A to S adapter (PHD) with dead-front safety shield is a simple cost-effective way to replace polyphase bottom-connected meters with modern socket-type meters.

The PHD features increased current-carrying capacity: 3/0 conductors; copper (200 amp, 165 amp continuous); 600 volt.



## K-BASE CONVERSION ADAPTERS

### METER CONVERSION AND INSTALLATION UPGRADES

In scenarios requiring between 200 amperes and 400 amperes, K-base meters can play an essential role. Brooks K-Base Adapters provide ease in converting K-base meter installations to accommodate conventional socket-type meters. For applications greater than 320 amperes, customers have the option of using the Brooks K-to-CT conversion kits as a cost-effective transition to transformer-rated metering. The product line includes K-4 and K-7 adapters as well as K-to-CT adapters, jumper links and all the accessories you'll need for safe conversion.

#### LP-K4-UL



##### DESCRIPTION

Rated 320 (continuous amp). Convert 400 amp service entrances to 320 amp plug-in style meters. This conversion allows the utility more freedom when embarking on a meter change-out project.

##### MODEL

2700002-UL (2K TO 2S)

#### LP-K4



##### DESCRIPTION

Rated for 320 amp (285 continuous) for class 320 meter; rated 200 amp continuous for class 200 meter. Convert self-contained K-base meter enclosures to socket enclosures.

##### MODEL

2700002 (2K TO 2S)

#### Bottom Fed K4



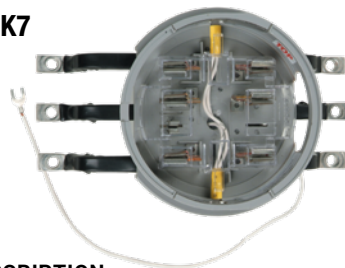
##### DESCRIPTION

Allows class 320 and class 200 socket style meters to be installed into existing K-4 400 amp sockets where the full capacity and high cost of the 400 amp meter are not required.

##### MODEL

81-4JH-SP3652 (SINGLE PHASE)

#### LP-K7



##### DESCRIPTION

Convert self-contained K7 meter enclosures to a socket enclosure. Allows proper clearance for the green plug-in ground feature on K7 enclosures.

##### MODEL

2700001 (16K TO 16S)

#### K4 to CT



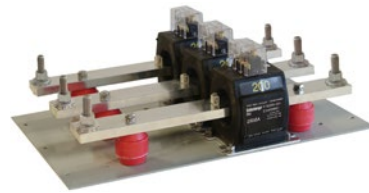
##### DESCRIPTION

The K4 to CT conversion is a single phase kit allowing utilities to convert K-base installations (over 320A) to transformer-rated services.

##### MODEL

600-7627

#### K7 to CT



##### DESCRIPTION

The K7 to CT conversion kit allows utilities to convert three-phase K-base installations (over 320A) to transformer-rated services.

##### MODEL

600-7545



Find the K-to-CT jumper links and accessories you'll need for safe conversion on page (13) of this catalog.

## METER INTERBASE ADAPTERS

Brooks' wide array of Interbase Adapters feature a one-piece injection molded polycarbonate shell and clear polycarbonate dead-front safety shield to prevent contact with live components. You'll find three different depth profiles (LP, EK and EKD) adapters as well as special forms like angled adapters for those cramped or obstructed view sites. If you don't see what you're looking for here, please ask about our customized adapters to meet your needs.

### LP Series



##### DESCRIPTION

Low Profile 1.2" Depth. The LP Series is designed for communication cable routing, monitor equipment and service provider access. Series can accommodate an RJ-11 telephone jack for direct access.

##### MODELS

LP-4J (2S)                      LP-7J (14/15/16S)  
LP-5J (12S)                    LP-8J (5S)  
LP-6J (4S)

### EK Series



##### DESCRIPTION

Medium Profile 3.5" Depth. The EK Series accommodates a variety of interface devices such as whole house disconnect switches, PC boards, surge suppression equipment, communication interfaces and recording devices.

##### MODELS

EK-4J (2S)                      EK-7J (16S)  
EK-5J (12/25S)              EK-8J (5S)  
EK-6J (4S)                      EK-13J (6/8/9/10S)

### EKD Series



##### DESCRIPTION

Deep Profile 5.25" Depth. Designed for applications requiring extra space to accommodate additional capability, allowing the inclusion of more active components and devices.

##### MODELS

EKD-4J (2S)                    EKD-6J (4S)  
EKD-5J (12/25S)              EKD-8J (5S)

### EK with Slide Coupler



##### DESCRIPTION

Medium Profile 3.5" Depth. Designed to allow for ease of connecting interface devices to ring or ringless sockets. The Slide Coupler has a standard 2" threaded conduit hub as portal into the meter adapter and four-hole bolt pattern to attach separate enclosures for applications including cellular communications, power quality interface and recording devices.

##### MODELS

Numerous kits and adapters available. Contact Brooks for model numbers.

### Right Angle



##### DESCRIPTION

Brooks' Right Angle Adapter is designed for installations that are difficult to read due to awkward location or obstructed view. Places the meter at an 85° angle. Read left or right. R, L designation in part number on 7 and 13 jaw models indicates the direction the meter will face when viewing the socket from the front. Fits both ring and ringless style sockets.

##### MODELS

RA-4JR-G2  
RA-6JR-G2  
RA-8JR-G2

## METER FORM CONVERSION ADAPTERS

### 2S Socket to 12 S Meter



##### DESCRIPTION

Allows a 12S or 25S network meter to be installed in a standard residential form 2S socket. The adapter provides a wire to attach to the neutral in the meter socket and adds a fifth jaw in the adapter for neutral connection to the meter.

##### MODELS

Available in bulk kit form for OEM applications. Contact Brooks for model numbers.

### Canadian 3S Socket to ANSI 3S Meter



##### DESCRIPTION

Allows an ANSI form 3S meter to be installed in a socket wired to the Canadian 3S standard. The adapter has a plunger bypass to short CT the secondary upon meter removal. It also moves the VT common/ground/neutral connection from position 4 to 5.

##### MODELS

Available in bulk kit form for OEM applications. Contact Brooks for model numbers.

## DISTRIBUTED ENERGY ADAPTERS

As energy storage, rooftop solar, electric vehicles and co-generation gain adoption, utilities face new metering challenges. Brooks' line of distributed energy adapters enable connecting the house meter and alternative energy source to a single meter socket. Adapters are available in both horizontal and vertical models.

### 37 Series Solar Adapter



**MODELS**

37-4JH-G2-SP5093-001  
(incl. 18" white neutral wire)

**DESCRIPTION**

- Adapter, co-generation, load side interconnection adapter
- 3-position terminal block rated up to 75 Amps per input
- 3/4" conduit hole at 6 o'clock
- UL listed

### EK Solar Series



**MODEL**

EK-4J-SP5111

**DESCRIPTION**

- Extender adapter, co-generation, load side interconnection adapter
- UL listed

## FIBER TO THE HOME (FTTH)

Brooks' innovative line of integrated power supply adapters supports these complex installation scenarios with simple-to-install, safe and reliable products. Each product incorporates a UL-60950 recognized power supply and an easy means for grounding the equipment at the meter socket. This saves installation time and money by eliminating the need for new outdoor receptacles and additional grounding points. No matter the complexity or the power requirements; we have the capabilities to provide you with a solution.

### 12V 25 Watt Adapter



**DESCRIPTION**

The Brooks 12V Power Supply EK Adapter provides a solution for easy installation and connectivity where a 12V power supply is needed. The adapter provides an integrated 25W supply that can be used to power AMI

**MODELS**

EK-4J-SP5060-C-S2 (load-side wiring)

## LOAD MANAGEMENT/SURGE PROTECTION

Brooks' adapters support load management, whether you're looking for a way to limit/extend service, prevent damage from power surges or implement sophisticated demand-side load control techniques.

### SurgeGuard



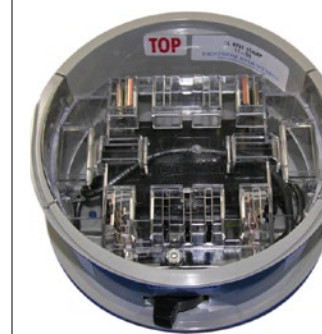
**DESCRIPTION**

- Brooks' low-profile polycarbonate meter base surge arrester with an integrated dead-front safety shield is designed specifically for installation at the meter socket for "whole house" residential primary protection.
- Special thermal disconnect plus current limiting fuses for each MOV protects against both thermal and current overload conditions.
  - UL listed to provide a very high level of surge protection in a low-profile meter socket adapter for residential or light commercial installations.
  - 45,000 amp rating withstands multiple surges making the SurgeGuard the only MBSA suitable for use on 200A and 320A meter sockets.
  - 15 year product warranty.

**MODELS**

MBSA-4J-180 4 Jaw (120/240V)  
MBSA-5J-180 5 Jaw (120/240V)

### Service Limiter/Extender



**DESCRIPTION**

Used as a collection tool, the service limiter provides limited electric service to delinquent customers that would otherwise have their service disconnected—in essence extending their service. With a proper program, increased collections can be achieved while projecting a positive image to the public.

**MODELS**

SL-4789 (4 Jaw, 25 meter, SPST breaker limits to 120V)  
SL-4790 (5 Jaw, 12/255 meter, SPST breaker limits to 120V)

### Capacitor Control Adapter



**DESCRIPTION**

- With voltage optimization becoming an increasingly important element of managing the efficiency of the grid, more utilities are utilizing capacitors to accomplish this goal.
- Brooks Capacitor Control Adapter is designed to mount directly on the power pole and accepts socket-based capacitor control devices.
  - Cabling from the capacitor control adapter provides remote control of power factor correction capacitors.
  - Models SP4899 and SP3751 are pre-wired with 30 feet of 10/3 SO cord.

**MODELS**

81-4J-SP4899 (Includes tag end strain relief)  
81-4J-SP3751 (No cabling provided)

# TEMPORARY POWER

Temporary power needs can arise during construction projects, in storm restoration work, in seasonal service scenarios and more. Brooks' full range of temporary power products and accessories make it safe, simple and secure.

## Temporary Meter Power



### DESCRIPTION

Designed to help utilities provide temporary electric service to building contractors at new construction sites. Isolates power from the breaker panel, allowing the device to be used at flood or fire damaged homes. UL listed.

	BREAKER ONE		BREAKER TWO		
	AMPS	VOLTS	AMPS	VOLTS	
TMP-2750	20	120	20	240	Receptacles located on either side of TMP
TMP-2751	20	120	20	120	

## Dead-Leg Adapter



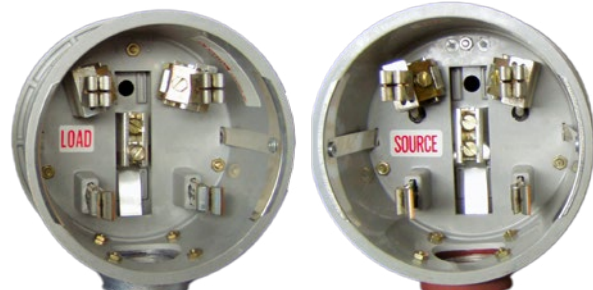
### DESCRIPTION

The patented Dead-Leg Adapter allows the safe resumption of temporary service when one leg of a 120/240 volt service is dead due to events such as storm damage or faulted underground service cable.

### MODEL

37-2J-4B-SP3561

## 700 Series Load/Source



### DESCRIPTION

The 700 Series temporary service adapters provide a quick method of installing emergency service to individual customers, from either a transformer or a neighbor's service box. The 240 volt receptacle outlets provide an unmetered outlet at the meter socket. Ideal for use by utilities that have a need to power a test board while accuracy testing their billing meter. Hub position on standard models is 6:00. Additional models available.

### MODELS

- 722A Ring Style Source Adapter
- 722B Ring Style Load Adapter
- 732A Ringless Source Adapter
- 732B Ringless Load Adapter

Utilities today often use the 700 Series for extended period service restoration work. Where one home has lost its service, a utility can use it to provide temporary power from a neighboring home, for example. Yet, the technology originated to meet a very different need—a 1960s neighborhood beautification project near Seattle. To meet soaring electric demand and booming population growth, Puget Sound Power & Light was pioneering underground electrical services for new Federal Housing Authority programs. They needed some sort of new "extender" to connect underground services into their system. Brooks modified a 100 amp ring style socket, producing a new adapter to extend underground service. It accommodated recessed sockets and the flush-mounted sockets of homes on cement slabs. As the concept of underground electrical spread, Brooks 700 series became a proven mainstay for underground electrical uses and later, for innovative power restoration.

INNOVATION MILESTONE

## Horn Bypass Cables



### DESCRIPTION

This temporary jumper cable is designed for use on electric meter jaw assemblies equipped with bypass horns. The handle provides a superior connection at the horn, eliminating unwanted power disruption. Set of two cables. Rated for use on all 200 amp services.

### MODELS

- 1000-SP4735 - Alligator Clip Handle
- 1000-SP2917 - White Screw Handle

## Special Jumpers and Bypass Cables



### DESCRIPTION

Provides a means to restore three-wire service in a meter socket when one leg of the service has failed due to a faulty meter jaw, block assembly or line connector in the socket.

### MODELS

- 1000-SP4009 (Insulated compression lug on both ends)
- 1000-SP1218 (Insulated compression lug on one end; meter blade jumper on other end)

## Meter Socket Jumper Covers



### DESCRIPTION

These patented jumper covers provide a safe, simple method to bypass a customer's meter socket. Constructed of clear Lexan with cadmium plated copper jumpers. Rated for 320 amp.

Enclosed and UL listed versions available. Prefix E placed before part number for enclosed version.

### MODELS

- JC-4B-UL (4 Blade, Single Phase)
- JC-6B-UL (6 Blade, Polyphase)
- JC-3BL (3 Blade - for use when right leg is dead)
- JC-3BR (3 Blade - for use when left leg is dead)

## Jumpers and Jumper Links

Insulated jumpers designed for jumping phase to phase and line to load. 100 and 200 amp available. Additional models available with various handle lengths.

	MODEL	Handle Length	Thickness	Plated
K-4 (Side & End Slots)	5A-1342	2 1/4"	1/8	Yes
K-4 (Side Slots)	5A-1456	2 1/4"	1/8	No
K-7 (Side Slots)	5A-1614	1 3/4"	1/8	No



Round, Plated Copper Insulated

**MODEL**  
8A-1730  
(100 amp)

Round, Plated Copper Insulated, Blades Turned 90°

**MODEL**  
8A-1730-SP261  
(100 amp)

Flat, Plated Copper Insulated

**MODEL**  
9A-1730-2  
(200 amp)

Flat Plated Copper Insulated

**MODEL**  
5A-1327  
(200 amp)



**MODEL**  
5A-1342  
K-4, Side & End Slots

**MODEL**  
5A-1456  
K-4, Side Slots

**MODEL**  
5A-1614  
K-7, Side Slots

# METER SOCKET SAFETY AND LINE TEST EQUIPMENT

Brooks is passionate about putting safety tools into the hands of metering professionals. Our complete line of socket safety tools and test equipment includes the Socket Jaw Tester, a vital tool for ensuring safe conditions prior to meter installation. We also offer several variations of indicative socket testers to detect backfeeds, wiring errors and poor neutral connections along with many other hazardous situations that your personnel encounter in the field. No other provider offers as thorough and complete a selection of instruments and field tools to ensure safety in metering.

## QUICK GUIDE TO BROOKS METER SOCKET SAFETY AND LINE TEST EQUIPMENT:

Meter Socket Simulators .....	16
Line Test Equipment .....	16-17
Disconnect / Reconnect .....	18-19



# METER SOCKET SAFETY AND LINE TEST EQUIPMENT

Are you struggling with flickering lights, non-registering meters or the tasks of ensuring safe socket conditions and testing advanced meter functionality for products such as remote disconnects? Brooks complete line of test equipment allows you to address the wide range of challenges that exist in the field today.

## METER SOCKET SIMULATORS

### Outdoor Meter Farm



#### DESCRIPTION

The meter farm is now easy to install, occupies less space, and is easily moved - all while retaining the highest degree of reliability that Brooks is known for. Controls adaptable to customer simulation/testing requirements. Number of meter positions and forms defined by the customer.

#### MODELS

Contact Brooks for model numbers

### Lab Test Warm-Up Board



#### DESCRIPTION

Safe and dependable, our warm-up boards provide voltage directly to the meter so electronic meters can be programmed in the shop, prior to on-site installation. Model 3904 units are available with socket controls at each of the 30 positions, or in groups of three positions per control.

#### MODELS

Wall mounted or movable  
Custom designs and styles available

### Portable Meter Warm-Up Stand



#### DESCRIPTION

This single-position desktop portable warm-up stand was designed to permit convenient programming and/or warm-up of electronic meters.

#### MODELS

807-3905-2212 (Form 2S—voltage only)  
807-3905-3888 (Form 2,4,5,12,25S—voltage only)  
807-3905-2406 (Form 6, 8, 9S—voltage only)  
807-3905-2712 (Form 14, 15, 16S—voltage only)



OUTDOOR METER FARM

## LINE TEST EQUIPMENT

### S-120 Single Phase Socket Tester



#### DESCRIPTION

Protect your meter installers with these safe, simple-to-use test devices. Check 120/240 volt meter sockets for short circuits, grounds, backfeed and wiring errors before meter installation. Helps protect employees from dangerous flash and fault conditions at the meter socket.

#### MODEL

S-120

### P-277 Polyphase Socket Tester



#### DESCRIPTION

The polyphase socket tester provides a safe and effective means to quickly check 277/480 volt meter sockets for wiring errors, short circuits and backfeed conditions - prior to setting the meter.

#### MODEL

P-277

### EK Line Buster



#### DESCRIPTION

Portable and ergonomic, the Line Buster delivers 2500 watt load alternately to each phase. Two digital LED voltmeters (85-265 VAC) clearly indicate a problem line or neutral. Front access plug-in cable conductor assemblies allow simplified connection to the neutral—and to both phases for bottom connected installations.

#### MODELS

LT-4629 Standard EK Line Buster  
1000-SP4639 Kit: EK Line Buster, 6' cable, Brooks bag

### Voltage and Load Indicating Socket Tester



#### DESCRIPTION

Protects both the installer and the end customer's equipment from dangerous wiring errors. Prior to setting meter, VLIST safely checks phase-to-phase and phase-to-ground potential while the circuit breaker protects against faults and indicates significant connected loads on single phase sockets.

#### MODELS

VLIST-SP3920 (32 amp breaker)

INNOVATION MILESTONE

The transition to AMI 2.0 is a milestone in grid modernization, transforming meters into intelligent nodes capable of managing Distributed Energy Resources (DERs) and improving system planning. Successful large-scale deployments of 100,000+ endpoints require meticulous preparation to ensure safety and cost-effectiveness. Brooks Utility Products serves as a single-source partner, providing the essential testing and security infrastructure needed for these complex change-outs. Our Meter Farms are fully customizable, providing a dependable environment for utilities to verify meter safety prior to field deployment. To support the longevity of electronic meters, our warm-up boards allow personnel to program devices in-shop, which helps maintain critical battery life. We also offer portable warm-up stands for flexible field or office programming and demonstration.

### Line-Neutral Tester



#### DESCRIPTION

An effective method to locate loose, open or faulty connections. Insert device into meter socket after rerouting entire load, then read voltage differential on the two LED volt meters.

#### MODEL

LT-3985 (5000 watt load)

### Quick-Check Load Device



#### DESCRIPTION

Designed for safely applying a load to "non-registration" meters to determine if the disk turns. 1300 watts for voltages up to 240 volts.

#### MODELS

1000-SP2407 (2 probes on 4' lead)  
1000-SP3526 (1 probe, 1 alligator clip on 4' lead)

### Two-Element Load Device



#### DESCRIPTION

Two models enable safe application of 2500 watt load to "non-registration" meters.

#### MODELS

1000-SP3548 (240 volt)  
1000-SP3696 (480 volt)



HOW TO REQUEST:

[www.BrooksUtility.com](http://www.BrooksUtility.com) - Meter Socket Safety and Line Test Equipment - A-Frame Meter Warm-Up Board Request Form

# DISCONNECT/RECONNECT

The right products make a difference in the vital work of timely, accurate and safe disconnect/reconnect tasks. Brooks products tackle the toughest problems with a variety of unique and patented products to meet a wide range of disconnect/reconnect scenarios while protecting revenue, workers and consumers alike.

## EK Disconnect



### DESCRIPTION

Safely and easily disconnect and reconnect customer electrical service by bypassing meter sockets under load. Load-side indicators warn of unwanted potential, eliminating the risk of possible faults during reconnect. Patented ejector handle and high-fault-interrupt circuit breaker ensure safe, quick and proper removal. Available as a complete kit including EK Disconnect device, LP Series adapters, sealing rings, bladed covers and convenient equipment bag.

### MODELS

0900039 EK-Disconnect w/ Ejection Handle, 480V  
30-1053 Blue Equipment Bag

The 21st century brought increased use of 320 amp services — and increased challenges for metering departments. As customer loads increased, so too, did the need for 320A lever bypass sockets. Safety conscious utilities turned to Brooks to develop a safe alternative to the dangerous practice of breaking 320A loads with the bypass mechanism. The EK Disconnect Brooks would develop solved the problem of safely disconnecting a 320 amp service. With its patented ejector handle and high-fault interrupt circuit breaker, the EK Disconnect not only provided a way to efficiently bypass meter sockets under load, it cut the risk of faults with new safety features like load-side indicators to warn of unwanted potential. The tool set a new standard for efficiency and safety that has expanded to include a complete kit.

INNOVATION MILESTONE

### EK DISCONNECT KITS

1000-SP4470	(1) EK-Disconnect (0900039) (1) 30-1053 Equipment Bag
1000-SP4837	(1) EK-Disconnect-SP4836 (no reconnect instructions) (6) LP-4J Adapter (1) LP-7J Adapter (1) 30-1053 Equipment Bag
1000-SP4411	(1) EK-Disconnect (SP4349) (1) 30-1053 Equipment Bag (1) EK-Disconnect (0900039) (4) 1-6003 Clear plain cover
1000-SP5033	(2) LP-4J Adapter (2) LP-7J Adapter (4) 10-9090 Handi-rings (1) 30-1053 Equipment Bag
1000-SP5069	(1) EK Disconnect (0900039) (4) LP-4J Adapter (4) LP-7J Adapter (4) LP-2J-SP4364 (1) 30-1053 Equipment Bag

Contact Brooks for additional EK Disconnect model and kit numbers.

## Service Disconnect Adapter



### DESCRIPTION

Brooks' patented, reusable service disconnect adapter provides a safe and economical means of disconnecting service on installations where it is not desirable to return meters to the shop. Meter readers will quickly spot this disconnect, because the meter is at a 45° angle.

### MODELS

SDA45 Grey

## Meter Disconnect Device



### DESCRIPTION

Made of high-impact nylon, MDD 45 can be reused many times. Meter is rotated 45°, positively disconnecting meter with no possibility of current leakage. Excellent dielectric strength of 8 kV. Can be used as line insulator when socket is being serviced.

### MODEL

MDD 45

## Meter Device Disconnect Sleeves - The Blue Boot



### DESCRIPTION

Disconnect sleeves safely isolate a meter temporarily from the electrical service while keeping the meter in place. Brooks' MDDS product offers a strengthened design, featuring durable Kodar® PETG plastic material and a distinctive shape to prevent premature tearing of the sleeve along common stress points. Sold per gross = 144 pcs.

### MODEL

600-MDDS

## LP with Potential



### DESCRIPTION

Low profile adapter contains only line-side connections in order to provide potential to metering electronics for AMI, TOU, IDR on a disconnected meter stored in the meter socket. This UL Listed, one-piece injection-molded polycarbonate interbase adapter comes in traditional grey, or select red or green, for high visibility of a disconnected meter. Contact Brooks for additional models.

MODELS	METER FORMS	STRAIGHT THRU JAW/ BLADE POSITIONS	RED	GREY	GREEN
LP-5J	2,12,14,15,16,17,25S	1,3,5,7,9	-SP4362	-SP4363	-SP4691
LP-2J	2S	1, 3	SP4364	SP4365	SP4679
LP-3J	2 & 12S	1, 3 & 5A	-SP4634		
LP-3J	2,12,25S	1,3,5	SP4366	-SP4367	
LP-4J	2,12,25S	1,3,5,5A	-SP4368	SP4369	
LP-4J	14, 15, 16 & 17S	1,3,7,9	-SP4372		SP4989

# TEST SWITCHES

Brooks designs and manufactures the finest quality and most complete line of test switches in the industry. Our Molded Base Test Switches incorporate many features for safety, durability and reliability. All standard switch assemblies are rated at 30 amperes, 600 volts AC and meet all applicable IEEE, EEL, and ANSI C12.9 standards.



- Brooks' exclusive double spring, phosphor bronze contact jaw will not spread, assuring positive contact, low resistance and easy operation at all times.
- The serrated or corrugated test ear is designed to positively prevent test clips from coming off unless the spring tension is released.
- Molded base or cut bases provide excellent insulating, tracking and dielectric properties.
- Cut base switches satisfy special requirements which cannot be met with molded base switches.
- Molded plastic handles are available in various colors including two-piece colored options and have provisions for wire ID. label.
- Hinge jaw assembly features a brass rivet in combination with a compression Belleville spring washer maintaining a low resistance, highly consistent jaw tension.
- Wire saddle traps the wire or crimp connector to insure positive location. The terminal stud is long enough to accept multiple connections.

# MOLDED BASE TEST SWITCHES

Brooks' Molded Base Test Switches are completely non-ferrous, manufactured from high conductivity copper and phosphor bronze. Test switches are furnished unplated and front-connected with red potential and black current handles as our standard offering. Any Brooks Molded Base Test Switch can be configured with the following options to suit particular application requirements. Contact Brooks for additional sizes and model numbers.

## Molded Base Test Switches



### OPTIONS FOR MOLDED BASE TEST SWITCHES

- Reverse Potentials:**
  - Potential switch handles are mounted in reverse where switches are de-energized when open, offering additional safety.

---

- Plating:**
  - Tin and nickel plating are available and provide additional protection for corrosive environments.

---

- Screw Terminals:**
  - An easy and secure way to connect wires to front-connected switches utilizing a captive pressure pad and box connector.

---

- Color-Coded Handles:**
  - A variety of colors (including two-piece/two-color) are available to match handle colors to customer specific wire color codes.

---

- Back Connected:**
  - Any Brooks test switch can be furnished in a back connected arrangement with insulated bushings for panel mounting.

---

- Channel Barriers:**
  - Permanent means of isolating potentials.

## Compact and Mini-Compact Test Switches



### DESCRIPTION

Designed with the switchboard and protective relaying in mind, Brooks Compact and Mini-Compact Test Switches take up less space than our conventional molded base switches.

- Safe and consistent isolation of equipment for the purpose of testing, repair and routine maintenance.
- Flexible configurations range from one to 30 poles in any combination of currents and voltages.
- Options for mounting and connections include flush, semi-flush, front connected or back connected.

## Roto Test Switches

Rated 30 Amps, 600 Volts



MODEL # ROTO TEST SWITCH			
400-400	Operating Key, Removable		
400-402	Roto Test Switch Oval Key, Non-Removable		
400-406	Roto Test Switch Oval Key, Pin installed,		

### DESCRIPTION

- Relays and meters may be safely isolated or disconnected for testing and replacement at the turn of a key.
- Its fully enclosed design ensures that no live parts are exposed.
- The switch can be used for transfer of relays and meter circuits without removing wiring or interrupting critical services.

SWITCH MODEL #	# OF POLES S.P.D.T	Break Before Make	
		POTENTIAL CONTACTS	CURRENT CONTACTS
401-404-1/8	4	0	4
401-422-1/8	4	2	2
401-440-1/8	4	4	0
401-606-1/8	6	0	6
402-624-1/8	6	2	4
402-633-1/8	6	3	3

### Safety Features:

- Double-spring, phosphor bronze, contact jaws are fortified with high conductivity reinforcing clips. The jaw is a spring in itself, ensuring perfect contact between blades and clips, low resistance and no overheating.
- No live parts are exposed—only the face plate appears on the front of the board.
- Heavy Bakelite case and rotor provide positive insulation.
- Test of relays is made from front board on test studs without any connection or disconnection and without interruption of service.
- It is impossible to trip the circuit breakers when testing. Any relay may be cut out by the operator, should emergency demand it.

## Test Switch Covers



### DESCRIPTION

All Brooks test switches can be supplied with a clear plastic cover. Plastic covers are injection molded of Lexan which is a flame resistant, unbreakable, UL listed material.

NUMBER OF POLES	4	7	10	12
PART NUMBER	115-204	115-207	115-209	115-211
ADD SUFFIX TO PART NUMBER FOR HARDWARE OPTIONS				
-LF	Front Connected Clear Cover			
-LFCH	Front Connected Clear Cover w/ Captive Hardware			

## Test Switch End Barriers



### DESCRIPTION

The new Test Switch End Barrier from Brooks allows easy installation of safety barriers to installed test switches in the field. Helps to separate voltage switches when adjacent to current switch or to another voltage switch at a different voltage. Conforms to ANSI C12.9 standards for test switches for transformer-rated meters.

### MODELS

- 60-6184-2 2 End Barriers
- 9050001 2 End Barriers, 3 Snap-In Barriers
- 9050002 2 End Barriers, 4 Snap-In Barriers

# SPECIALTY AND CUSTOM TEST SWITCHES

For isolating circuits, switching between generation sources or providing safe and reliable test access points in a substation, Our specialty switches can be configured for virtually any isolation or testing application in substations, generation plants or system protection schemes. If you cannot find what you are looking for, we can create it.

## Custom Test Switches

Our Resiten® block material is cut to your application specific dimensions. Potentials can be spaced further apart and are protected by barriers that are higher and thicker. Perfect for added safety or higher voltage applications.



- Fused Potential Switches:**
  - Single or multiple pole arrangements with provisions for mounting a 30 or 60 ampere fuse. Front or back connected.

---

- High Voltage Switches:**
  - Constructed on a Resiten base, potentials are spaced further apart and are protected by barriers that are higher and thicker for added safety. For services where 277/480 volts are used.

---

- Reactive Volt-Ampere Metering Switches:**
  - "Heel and toe switch"—A double-throw type switch that permits testing reactive meters. Availability includes "make after break" and "make before break" variations. All heel and toe switches are furnished "make after break" unless specified otherwise.

\*See Page 36 For NEMA 3R Test Switch Enclosures

# STANDARD SWITCH ASSEMBLIES

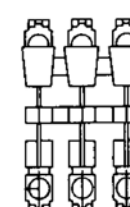
Brooks can supply test switches to meet practically any meter or relay testing requirement. If you have a unique application, you may design a switch made up of any number or combination of potential or current elements by selecting from the standard assemblies illustrated below.



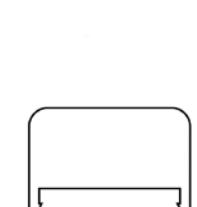
ASSEMBLY #1  
Single Pole Potential



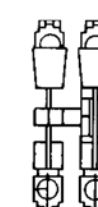
ASSEMBLY #4  
Solid Thru Bar



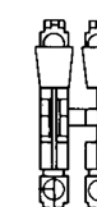
ASSEMBLY #18  
Three Pole Potential



ASSEMBLY #19  
Barrier



ASSEMBLY #26  
Load Test Jack Double Pole Current Element

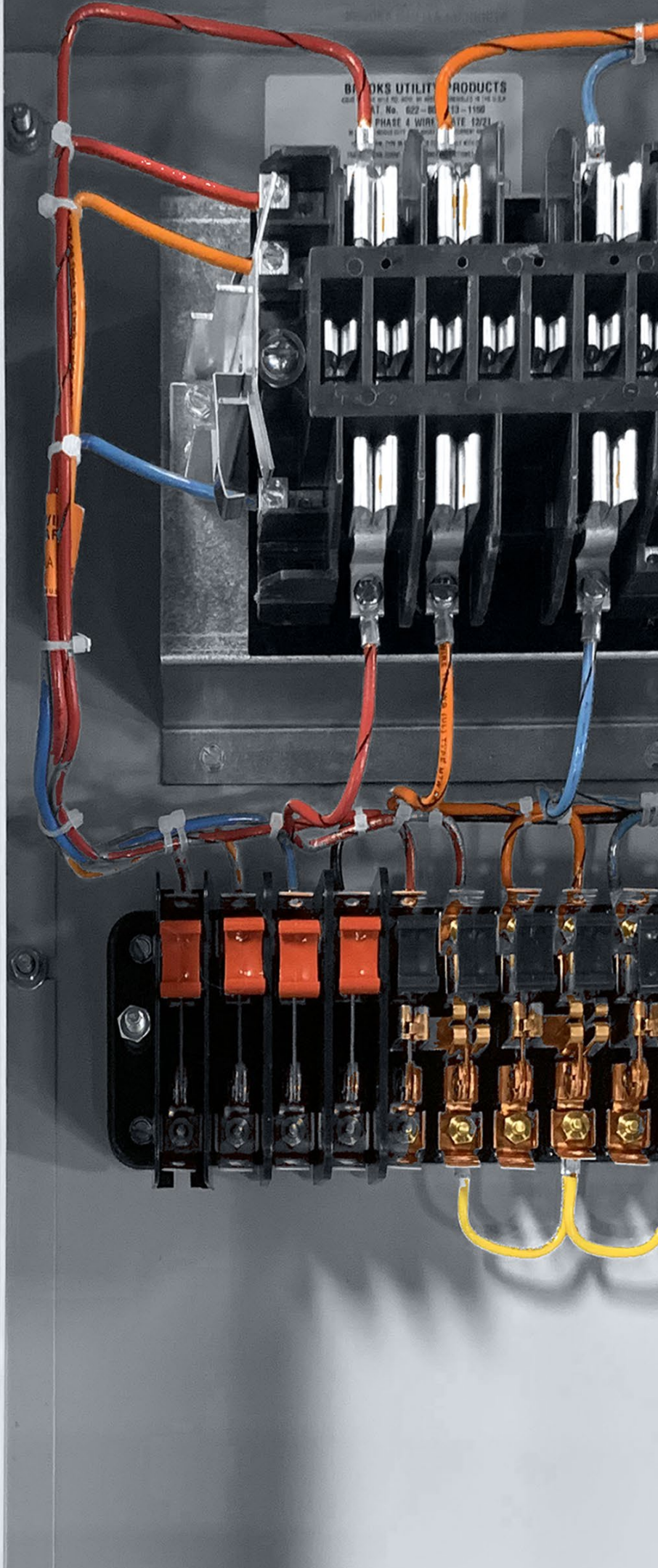
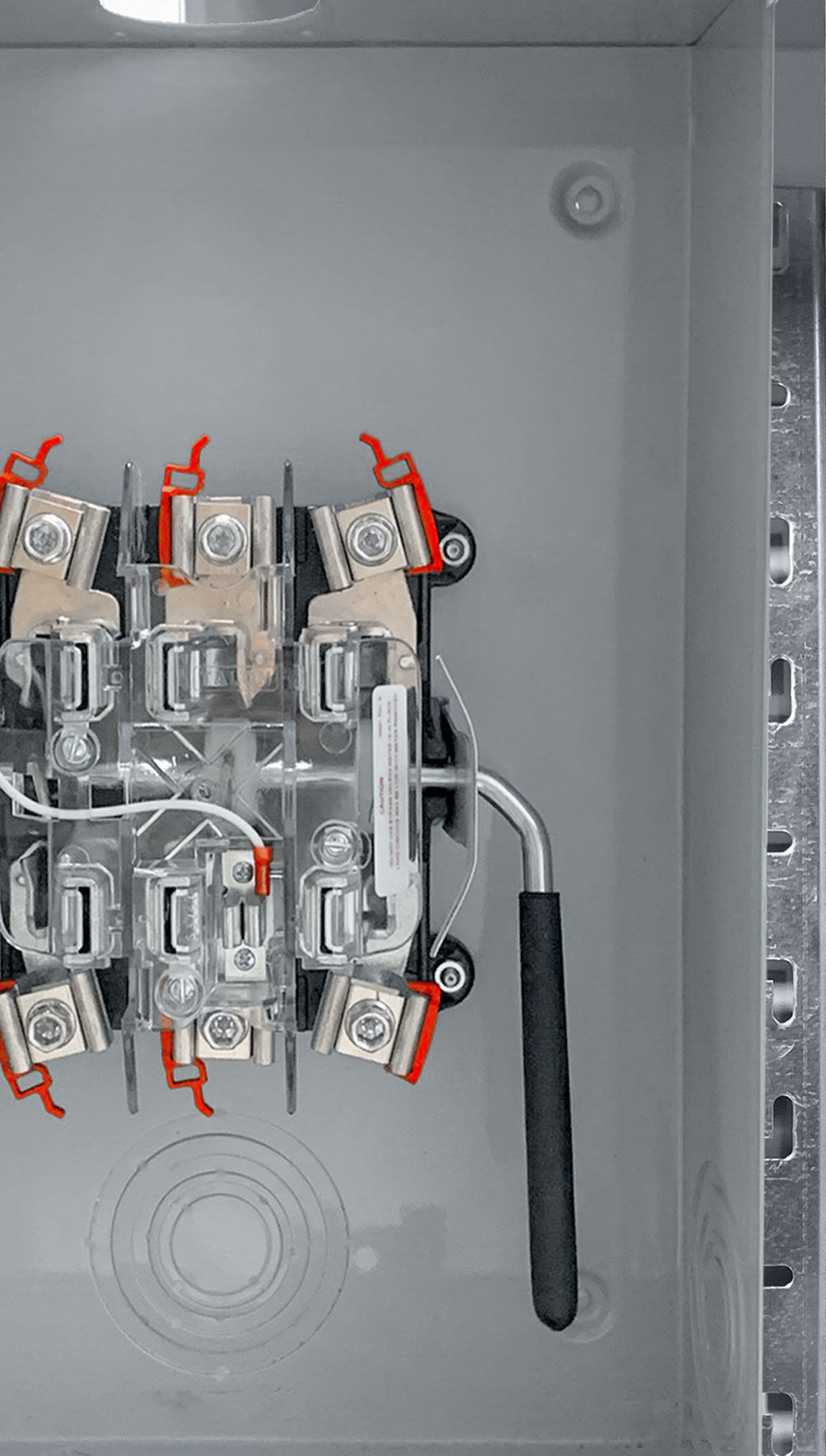


ASSEMBLY #27  
Load Test Jack Double Pole Current Element



### HOW TO REQUEST:

[www.BrooksUtility.com](http://www.BrooksUtility.com) - Test Switches - Molded-Base Test Switch Request Form



# METER SOCKETS AND TRANSOCKETS

From the introduction of the first transockets in the industry, to the many unique safety features found in every one of our sockets, we remain the market leader. Having provided pre-wired solutions for more than three decades, we have established a reputation for quality and reliability that is unmatched. Our commitment to quality is equaled only by our devotion to customer safety. Our unique, patented FlashSentry™ Meter Socket significantly reduces the risk of arc flash hazards in metering and many of our standard product features are designed to enhance the safety of every socket we provide.

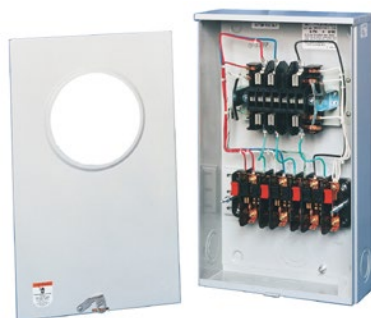
## QUICKGUIDETOBROOKSMETERSOCKETSAND TRANSOCKETS:

Pre-wired Meter Sockets.....	26
Lever Bypass Meter Sockets.....	26
Transockets.....	27
Meter Socket Accessories.....	28
Meter Socket Covers.....	29

# METER SOCKETS

## PRE-WIRED METER SOCKETS

### 3000 Series



**DESCRIPTION**  
Brooks' 3000 Series instrument transformer-rated meter sockets provide unmatched reliability and safety for transformer-rated metering installations. Every socket we produce meets the unique requirements of each utility customer — down to the wire color code and test switch configuration.

#### CONSTRUCTION

- 16-gauge G-90 galvanized steel, Munsell grey powder coat, oven baked, high gloss finish, 0.80" aluminum with mill finish
- Size: 12" W x 19 7/8" H x 4 3/8" D
- Knockouts: (six) 3/4" x 1" x 1 1/4" in bottom, sides, back; (1) 1/4" x 5/8" x 7/8" in bottom
- Rating: 20 ampere, 600 volts AC, transformer-rated
- Ring style: two-piece covers, Ringless: one-piece or two-piece covers
- Socket terminals accommodate #14 through #6 cu/al wire

#### OPTIONS

- Barrel Lock: KO provided in front cover and Barrel Lock bracket inside for high security
- Ground lug: single- or dual-port compression lug
- Knockout sizes other than standard
- Aluminum, mill finish, or unpainted - change catalog number prefix from 601- to 651-

### Safety Meter Socket



**DESCRIPTION**  
Brooks Safety Meter Socket incorporates a UL compliant finger safe meter block design that significantly reduces risks of arcs. Terminations are enclosed offering a second layer of protection from environmental contamination. The wiring to the test switch is straight, easily traced and compliant to customer color codes. Wire ties, wire bends and wire convolutions are eliminated. Compatible with customer color code and test switch specifications.

PATENT # 10,020,686

#### CONSTRUCTION

- This UL listed socket embodies the same quality construction as the 3000 Series Pre-Wired Socket except with a new meter block and wire harness
- Meter block material is UL approved polycarbonate; UL Standard
- Copper conducting components
- Geometrically aligned terminals provide a straight wire harness
- Recessed compression terminations clamp braided wire without splaying
- Captive recessed flat head screws allow easy slip-proof torquing of connections

#### OPTIONS

- Grey or clear meter block
- Barrel Lock: KO provided in front cover and Barrel Lock bracket inside for high security
- Ground lug: single- or dual-port compression lug
- Knockout sizes other than standard
- Aluminum, mill finish, or unpainted - change catalog number prefix from 601- to 651-

## LEVER BYPASS METER SOCKETS

### 200 AMP Lever Bypass Meter Socket



**NEUTRAL OPTIONS**  
Models available with bonded neutral, isolated neutral, and no neutral (as pictured)  
  
Please specify your neutral requirement when ordering

#### DESCRIPTION

- Single Phase, 200 AMP, 60 Hertz, 600 Volts AC
- 16-gauge galvanized G-90 steel, grey powder coat
- 4, 5 and 7 terminal configurations available
- Overhead or underground service
- Lay-in-lug terminal 6AWG – 350kcmil
- Ground stud
- 3" Knockouts: (3) bottom, (1) back, (1) lower left, (1) lower right
- Size - 13" W x 19" H x 5" D
- Aluminum, mill finish, or unpainted - change catalog number prefix from 601- to 651-

#### INDUSTRY STANDARDS

NEMA 3R, ANSI C 12.7, UL 414

\*See Page 28 For Lever Bypass Meter Socket Accessories

### 320 AMP Lever Bypass Meter Socket



**NEUTRAL OPTIONS**  
Models available with bonded neutral, isolated neutral, and no neutral (as pictured)  
  
Please specify your neutral requirement when ordering

\*Standard duty also available

#### DESCRIPTION

- 60 hertz, heavy duty\*, 320 amps continuous / 400 amp max, 600 volts ac
- 16-gauge galvanized G-90 steel, grey powder coat
- 4, 5 and 7 terminal configurations available
- Overhead or underground service
- 1/2" studs on block
- 1/4-20 stud w/ hardware for ground
- Four corner mounting embossments
- Knockouts: (3) bottom, (1) back, (1) left side, (1) right side
- Size - 34"H x 20"W x 6"D
- Aluminum, mill finish, or unpainted - change catalog number prefix from 601- to 651-

#### INDUSTRY STANDARDS

NEMA 3R, ANSI C 12.7, UL 414

### Snap2™



**DESCRIPTION**  
The modular design of the patented Snap2™ transformer-rated meter panel saves utilities time, reduces inventory costs and reduces costly field mistakes by separating the metering components from the enclosure on a pre-wired panel. The design allows contractors to install an empty meter enclosure. Utility personnel then take the pre-wired panel and snap it into place when setting the service.

### FlashSentry™



**DESCRIPTION**  
The FlashSentry™ meter socket safely converts 480V metering equipment to 120V, reducing the potential safety hazards associated with metering 480V services. The patented Safe-T-Guard™ barrier isolates the 480V equipment in a separate, sealable compartment. The voltage is reduced by either the Two Sockets – Two Meters VT Pack™ with Molex connections or with conventional voltage transformers. This separation of 480V and 120V equipment greatly reduces the risk of dangerous arc flashes.

## TRANSOCKETS

Brooks' comprehensive line of transockets and mini transockets combine all of the essential components required in transformer-rated services in one convenient package. By combining transformer enclosure and pre-wired transformer-rated meter socket in one package, installation can be done in a fraction of the space, in far less time and for a fraction of the typical installation cost. Our transockets are constructed of G-90 galvanized steel or aluminum and can be configured for any transformer-rated meter form. Three standard sizes offered in a variety of different dimensions to accommodate a wide range of customer loads.

### MINITRANSOCKET (UP TO 200 AMPS)



### TRANSOCKETS (UP TO 800 AMPS)



### TRANSOCKETS (UP TO 1200 AMPS)



### TRANSOCKETS (UP TO 2000 AMPS)



#### DESCRIPTION

- For use with CTs (donut or bar-type) and VTs
- Suitable for use in overhead or underground installations up to 2000 Amps
- Maximum 4" knockouts and hub openings (with optional cover plates or hubs available)
- Option to come pre-wired to customer wiring color code with test switch and customer specified instrument transformers
- Doors: Single, double
- Meter enclosure construction options:
  - 14-gauge G-90 steel with Munsell grey, powder coated, oven baked, high gloss finish
  - 0.100" aluminum with mill finish
- Meter cover construction options:
  - 14- or 16-gauge G-90 steel; or 0.08" aluminum

#### INDUSTRY STANDARDS

NEMA 3R, ANSI C12.7



#### HOW TO REQUEST:

www.BrooksUtility.com - Meter Sockets and Transockets - Safety Meter Socket/3000 Series Pre-Wired Socket Request Form  
www.BrooksUtility.com - Meter Sockets and Transockets - Transockets/800 Amp Transockets/200 Amp Mini-Transockets Request Form

# METER SOCKET ACCESSORIES

Whether you are repairing a damaged, self-contained 200 amp socket or setting a service for the first time, Brooks offers a complete line of meter socket accessories. From our Universal Block Replacement to conduit hubs and replacement hasps, no repair job is too large or too small.

## Universal Block Replacement Assembly



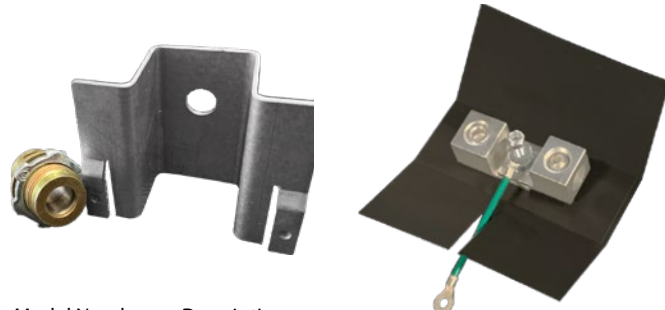
### DESCRIPTION

The Brooks Universal Block Replacement Assembly allows field replacement of most back mounted meter socket interiors without regard to enclosure depth. The height of the assembly can be easily adjusted to requirements of the socket enclosure. Available with a 200 amp current rating.

### MODELS

81-4JH-SP1736 (200 amp with hex drive wiring lugs)  
1000-SP1636 Mounting tool includes level, marking awl, drill bit.

## Lever Bypass Meter Socket Accessories



Model Number	Description
600-41A-0824	Snap In Barrel Lock Bracket W/ Lock Guard Kit
600-4A-7243	200A Lever Bypass Neutral Assembly Kit
600-4A-7249	320A Neutral Assembly w/Dual Port 350 KCM Lugs Kit
600-4A-7250	320A Neutral Assembly w/Single Port 600 KCM Lugs Kit
600-8A-5053	Ground Lug #2-14 Addition Kit 200-320A

## Interchangeable Gasketless Hubs and Hub Cover Plates

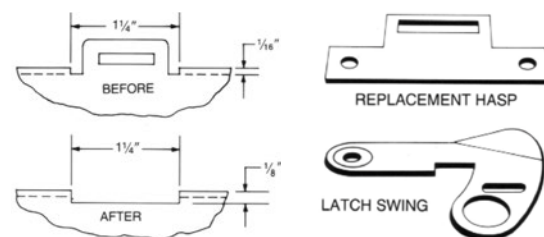


### DESCRIPTION

Brooks' die-cast aluminum hubs are now available in sizes from one to four inches. These high quality hubs are removable and gasketless and are the choice of many electrical distributors.

REMOVABLE HUBS		REMOVABLE HUB COVER PLATES	
MODEL NUMBER	SMALL BASE KNOCKOUT	MODEL NUMBER	MATERIAL
600-3077B	1"	600-3077A	Steel (Small)
600-3077C	1 1/4"	600-3077AA	Aluminum (Small)
600-3077D	1 1/2"	600-3078A	Steel (Large)
600-3077E	2"	600-3078AA	Aluminum (Large)
600-3077F	2 1/2"		
600-3078B	3"		
600-3078C	3 1/2"		
600-3078D	4"		

## Replacement Hasps and Latches for Ringless Meter Sockets



### DESCRIPTION

Seal and secure damaged, rusted, vandalized ringless meter socket covers quickly and economically with Brooks' one-piece stainless steel replacement hasps. The socket does not need to be removed from service and scrapped. Replace hasps in the field with toolbox tools. Body is .062" thick, keeper is .022" thick, corrosion and tamper resistant.

### MODELS

687-RH-101 Flat Replacement Hasp  
687-RH-102 Replacement Swing Latch

## Ring and Block Assembly for Panel Board Metering



### DESCRIPTION

Brooks' 5790 Series provides an economical metering position in panel boards, switchgear and enclosed metering packages. Install socket-type meters quickly and easily in locations where meter sockets are not available, or replace bottom connected meters.

### MODELS

600-5790 15 Terminal Ring and Block Assembly  
600-5790-A 13 Terminal Ring and Block Assembly with Bridge  
600-5790-B 13 Terminal Ring and Block Assembly  
600-5790-E 8 Terminal Ring and Block Assembly

# METER SOCKET COVERS

With the increased cost of today's sophisticated electric meters, it is more important than ever to protect that investment from vandalism and tampering. Brooks' full line of meter protective covers and meter socket covers are designed to provide a secure fit while allowing easy installation and removal.

## Meter Protective Covers



### DESCRIPTION

Constructed with heavy gauge galvanized steel and powder coated with an oven baked enamel to protect against environmental abuse. Available with or without a tough Lexan window, the hinged face plate opens to allow full access to demand reset meters.

MODEL NUMBER	DEPTH
685-521040	5 5/8"
685-521041	8"
685-521042	9"
685-521043	10"
*685-521044	9"
*685-521045	10"

\*For Polyphase Meters

Additional sizes available. Contact brooks for model numbers.

## Demand Reset Covers and Window Protective Shields



### DESCRIPTION

Brooks Demand Reset Covers are available in clear or opaque Lexan with removable hinges or in 18-gauge steel. Window protective shields provide 18-gauge steel security.

MODEL NUMBER	DESCRIPTION
500-3590-CL	4.5" x 6" Clear with Removable Hinges
500-3590-CLH	4.5" x 6" Clear with Non-Removable Hinges
500-3591	7" x 7" Grey Opaque with Removable Hinges
500-3591-CL	7" x 7" Clear with Removable Hinges
500-3591-CLH	7" x 7" Clear with Non-Removable Hinges

## Meter Socket Covers

### DESCRIPTION

Brooks' line of meter socket covers provides an inexpensive way to blank off ring style or ringless style meter sockets. Bladed models securely hold the blank in place, allowing quick and safe installation. All covers are constructed of molded polycarbonate, providing superior tensile and impact strength. Clear models feature an ultraviolet inhibitor that assures clear visibility for many years of outdoor use. Tamper resistant covers are manufactured by cold rolling the lip of a standard Brooks polycarbonate meter socket cover over a stainless steel insert.

### Bladed Blank



### MODELS

1-6002 Clear  
1-6112 Grey

### Unbladed



### MODELS

1-6003 Grey  
1-6008 Clear Lexan  
1-6116 Clear Polycarbonate

### Tamper Resistant



### MODELS

TRC-5116 Unbladed  
TRC-5002 Bladed



Brooks Utility Products' primary metering cabinets are engineered to provide reliable, flexible solutions for utility-scale power measurement. Designed for applications from 15 kV to 35 kV, these cabinets accommodate a range of configurations, ensuring safe, accurate, and efficient metering at medium voltage levels for both radial and loop feed systems. Their robust construction and adaptable features make them a trusted choice for utilities. Brooks' primary metering cabinets are widely used in utility substations, distribution networks, industrial facilities, data centers, and renewable energy sites, reflecting a strong reputation for reliability and value.

# PRIMARY METERING CABINETS

# PRIMARY METERING CABINETS

## PRIMARY CABINETS - 7624 SERIES (STANDARD)



### DESCRIPTION

The 7624 Series serves as our versatile workhorse, offering a broader 15kV to 25kV voltage class to support a wider range of utility-scale projects. Customers typically prefer this model for general grid hardening or infrastructure replacement projects because it balances size with increased internal clearance, allowing for a broader range of instrument transformer configurations. Its larger 79" width provides the necessary flexibility for both radial and loop-style feeds, making it the standard choice for utility customers looking for a reliable, highly adaptable primary metering solution for various site requirements. Multiple kV, ampere, dimension, and radial or loop feed configurations are available.

### MODELS

700-7624 (15-25kV, 200-600 Amperes)

### DIMENSIONS

79"W x 54"H x 54"D

### BROOKS PRIMARY METERING CABINET FEATURES:

#### MATERIAL

- 12 GA Stainless Steel Main Cabinet
- 12 GA G-90 Galvanized Steel Main Cabinet
- 12 GA G-90 Galvanized Steel Parking Stands
- Powder coated light gray or pad mount green

#### CONSTRUCTION

- Designed to conform to ANSI C57.12.28
- Bolt together construction
- Round head square neck carriage bolt
- Stainless steel used to secure top
- (3) hinges per door stainless steel
- Cross kinked roof for added strength and for preventing moisture
- (2) parking stand per phase
- Removable lifting provisions

#### SECURITY

- 3 point shoot bold latching system
- Captivated penta-head bolt locking
- Provisions for added padlocking
- Dead front GPO-3 panel on high voltage side
- Prop rods keep door from closing during maintenance at (90, 110, 140)
- Louvers screened for tamper proof protection

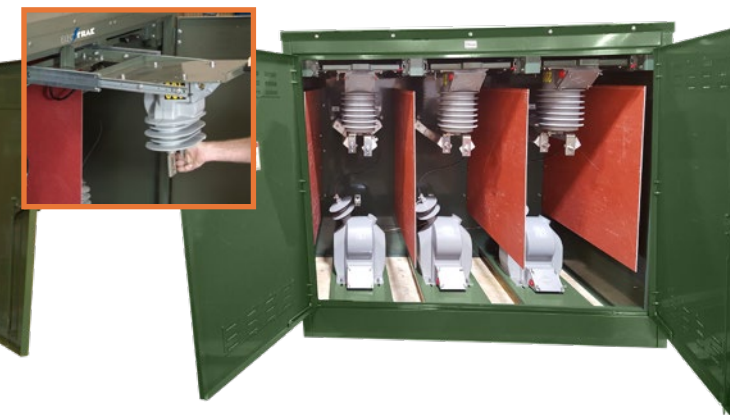
## ELECTRAK™

There's never been a primary metering cabinet like Brooks' ELECTRAK™. The ELECTRAK's™ patent pending design contains pullout shelves that hold up to 400 pounds each of CT/PT equipment. Workers won't have to crawl inside a cabinet for repair work or change-outs. Instead, they just roll out the shelf for easy access to the transformers.

7950 ELECTRAK™



7951 ELECTRAK™



### DESCRIPTION

The 7950 and 7951 Series ELECTRAK™ come with individual slide out shelving units, and are designed for higher capacity installations. The units measure 79"W x 54"D x 58"H and are constructed of 12-gauge galvanized G-90 steel with Munsell green high gloss finish. Rated for 15-25kV, 200-600 amperes, they can utilize any conventional transformer (i.e. ABB, etc.) and can be completely pre-wired with transformers before delivery to the site.

### MODELS

700-7950 (15-25kV, 200-600 Ampere) Top & Bottom Slide Out Shelving

700-7951 (15-25kV, 200-600 Ampere) Slide Out Top Shelving, Fixed Bottom Shelving

### DIMENSIONS

79"W x 58"H x 54"D

### INNOVATION MILESTONE

Trying to maneuver, see, and safely install or replace heavy medium-voltage transformers in confined spaces is challenging and potentially dangerous. Several utilities sought a better way. Could Brooks design a primary metering cabinet that would allow workers to do restoration or maintenance work with greater safety and comfort and fewer obstacles? Brooks' answer? The original, patent pending ELECTRAK™ series of primary metering enclosures with roll-out shelves.

# PRIMARY METERING CABINETS

## 5454 SERIES (COMPACT)



### DESCRIPTION

The 5454 Series is designed as a space-saving, 15kV-only solution for utilities that require a smaller physical footprint without sacrificing safety or quality. Measuring just 54"x 54" x 52", this compact unit is ideal for high-density residential areas or small commercial developments where pad space is at a premium. While it is the smallest in our lineup, it remains highly customizable and maintains the same dead-front safety standards as our larger **MODELS**, making it the preferred choice for straightforward 15kV applications where efficiency and value are paramount.

### MODELS

700-5454 (15 kV/95kV BIL Rating, 200-600 Ampere, 3-phase)

### DIMENSIONS

54"W x 54"D x 52"H

## 10266 SERIES (LARGE LOAD)



### DESCRIPTION

The 10266 Series is engineered for high-capacity applications, providing precise, utility-grade primary metering for the largest medium-voltage power loads like data centers and utility-scale renewable energy integration. These heavy-duty 35kV Large Load units are rated for 150kV BIL and available in 200A or 600A configurations, featuring a robust NEMA 3R bolted enclosure crafted from galvanized or stainless steel to withstand harsh environments. Safety is prioritized through a standard dead-front design and GPO-3 barriers for maximum phase isolation, ensuring technician protection during critical operations. Customization to support utility-specific requirements is available within a standardized platform design.

### MODELS

10266 (35 kV, 200-600 Ampere)

### DIMENSIONS

102"W x 66"D x 60"H

## PORTFOLIO SUMMARY



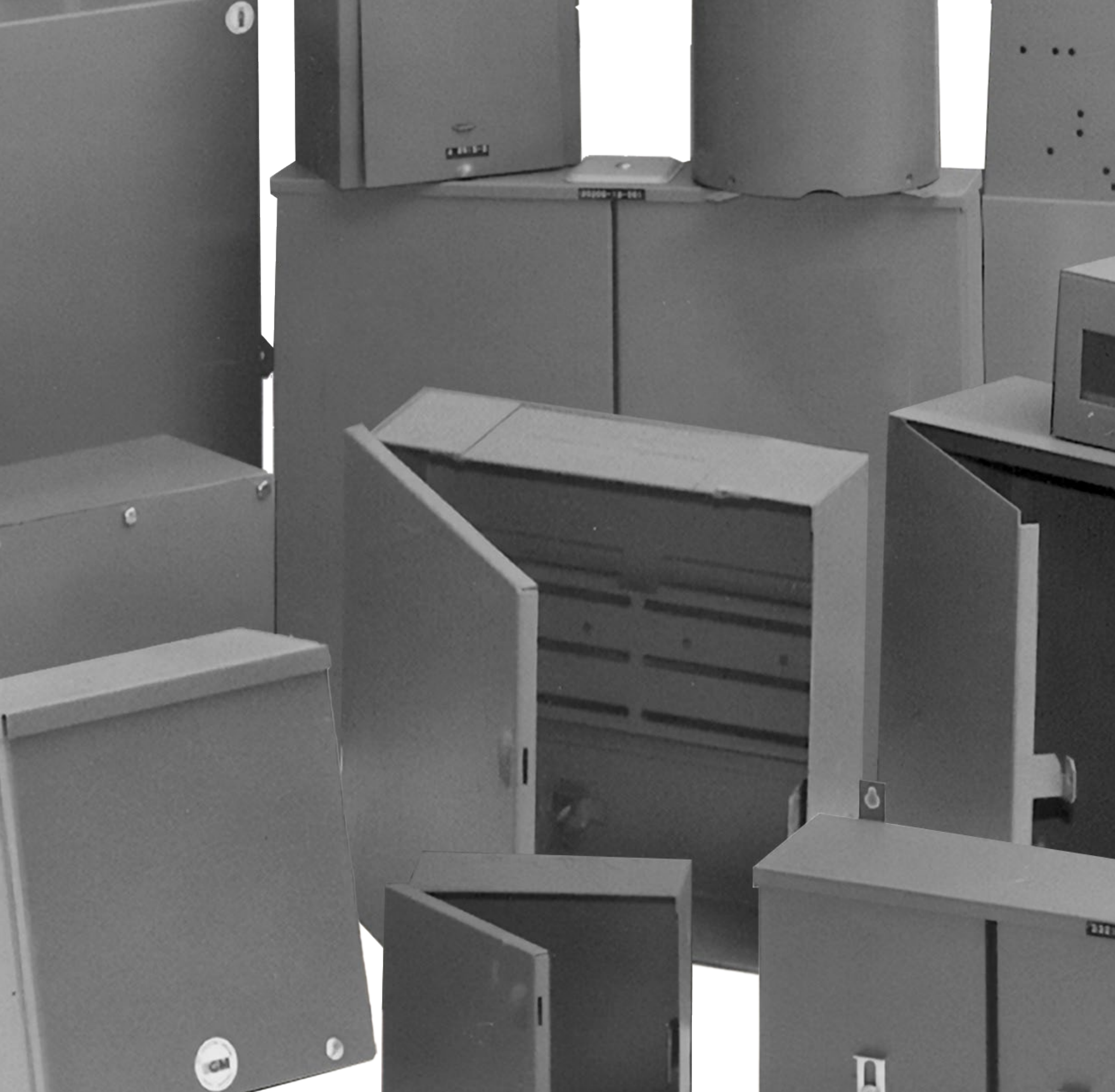
CHARACTERISTIC	5454 SERIES (COMPACT)	7624 SERIES (STANDARD)	7650 (ELECTRAK)	10266 SERIES (LARGE LOAD)
Voltage Class	15kV	15-25kV	15-25kV	35 kV
Current / Bushing Rating	200 A, 600 A	200 A, 600 A	200 A, 600 A	200 A, 600 A
Size	54" W x 54" D x 52" H	79" W x 54" D x 54" H	79" W x 54" D x 58" H	102" W x 66" D x 60" H
Feed Type	Radial, Loop	Radial, Loop	Radial, Loop	Radial, Loop
Bushing Wells (Line & Load)	2-3 bushings / phase	2-4 bushings / phase	2-4 bushings / phase	2-4 bushings / phase
Enclosure	Bolted design, NEMA 3R	Bolted design, NEMA 3R	Bolted design, NEMA 3R	Bolted design, NEMA 3R
Enclosure Material	Galvanized Steel, Stainless Steel	Galvanized Steel, Stainless Steel	Galvanized Steel, Stainless Steel	Galvanized Steel, Stainless Steel
Paint Finish	Munsell Green 7GY 3.29/1.5	Munsell Green 7GY 3.29/1.5	Munsell Green 7GY 3.29/1.5	Munsell Green 7GY 3.29/1.5
Phase Barriers	GP03 barriers between phases and dead-front	GP03 barriers between phases and dead-front	GP03 barriers between phases and dead-front	GP03 barriers between phases and dead-front
CT Bus Bar Connections	Standard tin-plated copper	Standard tin-plated copper	Standard tin-plated copper	Standard tin-plated copper
Instrument Transformers	Agnostic, install or provision for utility provision	Agnostic, install or provision for utility provision	Agnostic, install or provision for utility provision	Agnostic, install or provision for utility installation
Meter Socket & Test Switch	Optional	Optional	Optional	Optional

All designs conform to ANSI C57.12.28 requirements.



HOW TO REQUEST:

[www.BrooksUtility.com](http://www.BrooksUtility.com) - Primary Cabinets - 7624 Primary Metering Cabinets/7950 Electrak/7990 Electrak Request Form



Whether it's for a junction box or a transformer, the enclosure you select must provide the safety and security needed to ensure reliable service. Brooks' NEMA rated, UL listed enclosures provide superior value through unmatched quality that meets virtually any specifications for indoor and outdoor applications.

FEATURES:

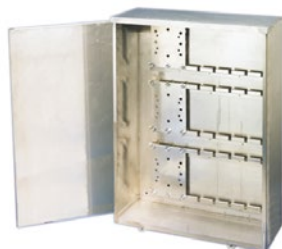
- NEMA type 3R
- UL 50 type 3
- Constructed with galvanized G-90 steel or aluminum
- Light Munsell grey, powder coated and oven baked provide a high gloss polyester finish
- Protects against rain, sleet and snow in outdoor installations, or dripping water in indoor applications.

# ENCLOSURES



# ENCLOSURES

## NEMA 3R Slip-Under Cover Transformer Enclosures



MODEL #	MATERIAL	WIDTH	HEIGHT	DEPTH
511U7875	16G G-90	30	42	11
561U3802	.080"ALUMINUM	30	46	14.5
511U9352	16G G-90	32	34	12
561U3815	.080"ALUMINUM	32	34	12

### DESCRIPTION

Designed for use as a current transformer and/or potential transformer and enclosure.

- Top overlaps sides and cover
- Two stainless steel hasps provided for padlocking
- Transformer mounting (cheese) plates provided
- Notched mounting rails for cheese plates
- Reinforced cover
- Options: Steel or aluminum construction, holes, hubs, cutouts, special sizes, knockouts; rail, plywood, steel, or aluminum backboard; aluminum, mill finish or unpainted

## NEMA 3R Outdoor Single Door Instrument Transformer Enclosures



MODEL #	MATERIAL	WIDTH	HEIGHT	DEPTH
564-9328	.100"ALUMINUM	24	25	14
514-6359	14G G-90	30	30	14
564U6765	.100"ALUMINUM	36	32	14
564-8005	.100"ALUMINUM	36	36	14

### DESCRIPTION

Designed for use as current transformer and/or potential transformer enclosures.

- Top overlaps sides and doors to form drip-shield
- 2" stainless steel slip-joint hinges allow for easy door removal
- CT bracket and mounting hardware
- ¼ - 20 NC2 Pem studs allow for multiple bracket mounting positions and easy installation
- Ground lug #2-14 wire
- Options: Steel or aluminum construction, holes, hubs, cutouts, special sizes, knockouts; aluminum, mill finish or unpainted
- Rail, plywood, steel, or aluminum backboard

## NEMA 3R Outdoor Double Door Instrument Transformer Enclosures



MODEL #	MATERIAL	WIDTH	HEIGHT	DEPTH
574-6375	.100"ALUMINUM	24	29.25	9
574U3807	.080"ALUMINUM	28	30	14
574U3805	.080"ALUMINUM	36	36	14
524U6547	14G G-90	48	48	13

### DESCRIPTION

Designed as an economical enclosure for instrument transformers, wiring boxes and junction boxes

- Drip-shield top and seamless sides, front and back
- Doors wrap over top, sides and bottom
- Right door extends and seals over the left door
- Slip-pin hinges allow for easy door removal
- Two padlockable pull catches. A hasp is also provided
- Backboards are exterior grade plywood (finished one side)
- No gasketing or knockouts
- Options: steel or aluminum construction; insulated or grounded mounting; insulated door; aluminum, mill finish or unpainted
- Rail, plywood, steel, or aluminum backboard

## NEMA 3R Slip-Under Cover Enclosure



MODEL #	MATERIAL	WIDTH	HEIGHT	DEPTH
511-1196	16G G-90	7.25	9.0625	3.375
511-3463	16G G-90	8	10.5	4.375
561U3811	.080"ALUMINUM	8	12	3.75
511-9359	16G G-90	8	16	6
511-5548	16G G-90	12	12	6
561-5568	.080"ALUMINUM	24	24	12

### DESCRIPTION

TYPE SU

Designed for use as wiring boxes and junction boxes

- Drip-shield top and seam-free sides, front, and back protect from rain, snow or sleet
- Slip-on removable cover
- Embossed mounting holes on back of enclosure
- Provisions for padlocking
- No gasketing
- Options: Steel or aluminum construction; holes, hubs, cutouts, louvers, special sizes, knockouts; aluminum, mill finish or unpainted

## NEMA 3R Hinge Cover Enclosure



MODEL #	MATERIAL	WIDTH	HEIGHT	DEPTH
514-1814	16G G-90	9	10	3.5
514-3246	14G G-90	10	22	5
564U5183	.080"ALUMINUM	16	20	6
564-6055	.100"ALUMINUM	16	33	12
514-2928	14G G-90	18	30	8
564U5192	.100"ALUMINUM	36	36	12

### DESCRIPTION

TYPE RHC

Designed for use as junction and wiring boxes in outdoor installations.

- Drip-shield top and seamless sides, front and back prevent rain, sleet or snow from entering the box
- No gasketing provided
- Spot welded construction
- Door is hinged on the left side with steel-pinned butt hinges
- Padlockable swing latch
- Mounting holes
- No knockouts or hub opening
- Options: Steel or aluminum construction; panels (must be ordered separately—blind Pem nuts for mounting), holes, cutouts, louvers; aluminum, mill finish or unpainted



HOW TO REQUEST:

[www.BrooksUtility.com](http://www.BrooksUtility.com) - Enclosures - NEMA 3R Enclosures Request Form



# LOCKING AND SEALING

As the original seal manufacturer, we can trace our roots back to securing the very first electric meters in the late 1800s. From our initial position of leadership, we've never stopped innovating: introducing the first plastic padlocks and the first keyless locking ring. Your meter security is a critical element in providing safe and reliable service. Whether for gas, water or electric metering, Brooks' sealing and locking portfolio has your needs covered.

## QUICK GUIDE TO BROOKS LOCKING AND SEALING:

Short-Term Indicative Seals .....	42
Long-Term Indicative Seals .....	43-44
Wire and Cable Seals .....	45
Barrel Locks and Keys .....	46
Barrel Lock Accessories .....	47
Locking Rings .....	48
Locking Accessories .....	49-50
Gas and Water Locking .....	51



## INDICATIVE SEALS: SHORT-TERM

Brooks' short-term seals play a vital role in preventing meter tampering. Our short-term seals are used in a wide range of applications from securing the demand reset mechanism to preventing optical port tampering to securing the meter cover to the meter. As the industry leader in meter security, you can trust Brooks' experience to secure your most critical assets.

### BT Aluminum Meter Seal®



#### DESCRIPTION

The BT Meter Seal<sup>®</sup> is a security device for sealing electric meter back plates. The meter seal requires no tools to install or remove. The base is stamped "SEALED" and the seal is scored to fracture if unauthorized entry is attempted. Up to four letters can be stamped on flag, with the option of stamping on both sides.

#### MODELS

3571000	Plain Aluminum
3570000	Anodized
3570500-2	Painted Green
3570500-3	Painted Blue

### Multibar Seal



#### DESCRIPTION

An aluminum seal designed for quick installation. Ideal for use on all demand reset mechanisms, the Multibar is self-destroying if tampered with. Can be stamped with company initials and consecutively numbered.

Colors available: red, yellow, green, blue, white, black and brown.

#### MODELS

3850000	Plain Aluminum, Ribbing, Both Larger and Smaller Bars,
3850500	Plain Aluminum, Smaller (5.56 mm) Bar Only, No Ribbing
3850700	Plain Aluminum, Larger Bar Only
3860000-X	Painted, Both Larger and Smaller Bars, Ribbing
3860500-X	Painted, Larger Bar Only

Note: X denotes color selection.

### ProngLok Pro4 Seal



#### DESCRIPTION

The ProngLok Pro4 Seal is a metal "crimp" seal used in conjunction with a wire and secured with a sealing tool. Once crimped, the wire cannot be removed without being cut or destroying the seal. A large flag provides room for embossed information. Easy to install and use, it is available in aluminum or zinc coated steel. Pronglok Sealing Tool is required for installation.

#### MODELS

37541120	Galvanized, Embossed
37541220	Aluminum, Embossed
80032000	ProngLok Sealing Tool

### OptiLock®



#### DESCRIPTION

Prevents unauthorized access to metering data. Safeguards ports from the environment. The OptiLock<sup>®</sup> is easy to install and seal with long-term, demand or cable lock seals.

#### MODEL

2-1022



### Spring-Lok® Seal



#### DESCRIPTION

A tamper-evident seal designed for electric meter demand reset mechanisms. It is applied with one hand and removed by breaking its spear with a simple twist. Small hasp fits smaller applications. Available in a variety of colors with your company name and seven digit identification number. An optional stringing hole is also available for use with a Spring-Lok<sup>®</sup> key ring.

Colors available: Blue, Yellow, Red, Green, White, Orange, Black, Grey

#### MODELS

6300000-X	Heat Stamped, Consecutively Numbered
6302000-X	Heat Stamped, Consecutively Numbered w/ Donut

Note: X denotes color selection.

## INDICATIVE SEALS: LONG-TERM

### ENDURO® SEALS

Brooks' Enduro<sup>®</sup> Series is constructed of durable acrylic plastic and designed to provide long service life in harsh environments. Available with a solid body and contrasting color insert or with a transparent body and solid color insert. Should tampering attempts take place, inclined ramps on the insert force the wire legs to break out of the body, providing visible evidence. Seals are laser engraved with company identification and sequential numbering. Available in square body.

### Enduro® Seal



#### MODELS

60600XX-X	.047" Galvanized Regular Hasp, Square Body
60610XX-X	.047" Galvanized Secure Hasp, Square Body
60800XX-X	.047" Stainless Steel Regular Hasp, Square Body
60810XX-X	.047" Stainless Steel Secure Hasp, Square Body

Note: XX denotes insert color selection.

### Enduro® Seal Options

- Square body (Enduro<sup>®</sup>, Tamper Guard Enduro<sup>®</sup>, Laser Etched Enduro<sup>®</sup>)
- Blunt cut hasps
- Wire Hasp: .047" (1.2mm)
- Galvanized or stainless steel

### ENDURO SEAL COLOR SELECTION CHART

1 RED	2 GREEN	3 BLUE	4 ORANGE
5 GRAY	6 YELLOW	8 BLACK	10 WHITE
12 PURPLE	13 DARK BLUE	14 DARK GREEN	27 CLEAR

### INNOVATION MILESTONE

Brooks innovated the first acrylic utility meter seal, the Enduro, to provide superior tamper evidence, higher quality, and longer field life than its traditional polypropylene counterpart. The Secure Hasp Plus seal design protects against picking and has enhanced contamination protection. Today, Brooks also offers high quality laser markings to display logos, barcodes, warnings, voltage ratings, field alerts, and other custom messages to increase tamper evidence.

## INDICATIVE SEALS: LONG-TERM (CONTINUED)

### PLASTIC PADLOCK SEALS

Brooks' line of Plastic Padlock Seals have been stabilized with a polypropylene inhibitor, protecting against harsh UV rays that cause color fading and degradation of the seal body. Offered in a wide variety of colors, they can be cold or heat stamped with company name or logo and consecutively numbered. Available in a choice of galvanized or stainless steel, regular and secure hasps.

#### Plastic Padlock with Medical Caduceus



#### DESCRIPTION

The same Plastic Padlock as described above can be decorated with a caduceus symbol, commonly used by medical organizations. Three digit maximum for lettering. The symbol is laser etched in red, black or white along with a seven digit number.

#### MODELS

6170700-X .047" Galvanized Hasp Round Bottom  
6170800-X .047" Galvanized Hasp Square Bottom  
6180700-X .047" Stainless Steel Hasp Round Bottom  
6180800-X .047" Stainless Steel Hasp Square Bottom

Note: X denotes color selection.

### PLASTIC PADLOCK SEAL COLOR SELECTION CHART

1 RED	2 BRIGHT GREEN	3 LIGHT BLUE
4 ORANGE	5 GRAY	6 YELLOW
8 BLACK	10 WHITE	11 PINK
12 PURPLE	13 ROYAL BLUE	19 LIME GREEN

### Plastic Padlock Seal



#### DESCRIPTION

This seal blushes to indicate signs of tampering. Plastic Padlocks can be heat or cold stamped.

#### MODELS

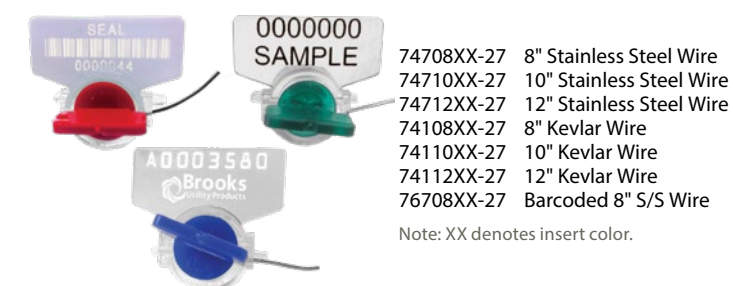
6170000-X .047" Galvanized Regular Hasp  
6170003-X .047" Galvanized Secure Hasp  
6180000-X .047" Stainless Steel Regular Hasp  
6170040-X .047" Galvanized Regular Hasp Paneled  
6170041-X .047" Galvanized Secure Hasp Paneled  
6180040-X .047" Stainless Steel Regular Hasp Paneled

Note: X denotes color selection.

## INDICATIVE SEALS: WIRE AND CABLE

Brooks' line of wire and cable seals offer a safe and more secure alternative to lead wire seals and other conventional sealing devices. Our versatile line of wire seals offer small wire gauges and acrylic bodies for securing applications with smaller diameter entry points and prone to prolonged exposure to the elements. Our cable seals are available in various cable lengths and diameters for applications requiring the highest level of security. Offered in a variety of colors and finishes, all of Brooks' wire and cable seals can be customized and consecutively numbered.

### Toolless Roto Seal®



74708XX-27 8" Stainless Steel Wire  
74710XX-27 10" Stainless Steel Wire  
74712XX-27 12" Stainless Steel Wire  
74108XX-27 8" Kevlar Wire  
74110XX-27 10" Kevlar Wire  
74112XX-27 12" Kevlar Wire  
76708XX-27 Barcoded 8" S/S Wire

Note: XX denotes insert color.

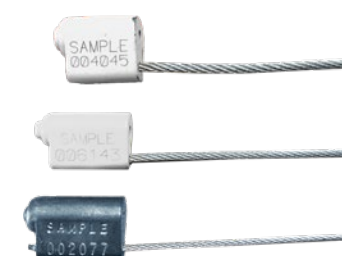
#### DESCRIPTION

Designed for applications with small diameter holes, wires rotate around a colored Lexan rotary insert enclosed in a clear acrylic body. No tools are required for installation. Tampering is detected by visually inspecting the back of seal.

Available with or without a pre-installed stainless steel or plastic coated Kevlar wire in length up to 18". This seal features a large flag that can be personalized, numbered or barcoded.

Insert Colors: Red, Blue, Green, Yellow, Orange, Grey

### EZ Lok



#### DESCRIPTION

A medium-duty seal featuring galvanized, non-preformed security cable available in 1/16" and diameters. Cable frays when cut to indicate tampering. Standard lock body is constructed of corrosion resistant cast zinc, and available in non-ferrous for flammable environments. Standard cable length is 12".

#### MODELS

CEZ116 1/16" cable Mill, White  
CEZ18 1/8" cable Mill, White

#### COLORS

### FlexSecure



#### MODELS

FS 15 1/16" cable  
FS 35 1/8" cable

#### COLORS

Red, Blue, Black  
Red, Blue, Black

#### DESCRIPTION

This tamper-evident cable seal separates into individual strands when cut, and cannot be resealed. The seal body is constructed of aluminum alloy and provides added durability over plastic bodied seals yet maintains color and customized identification. Barcoding optional. Contact Brooks for complete part numbers.

# BARREL LOCKS AND KEYS

Brooks Barrel Locks are available in a number of series providing a range of security levels from our entry level F Series to our most secure S-1000 Series of locks. All Brooks Barrel Locks are made of case-hardened or stainless steel with unique plunger designs that make them virtually pick proof and fit all competitive locking devices that take standard length Barrel Locks.

## F Series

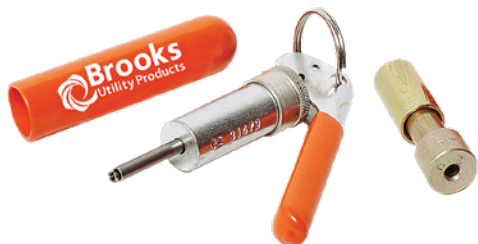


**DESCRIPTION**  
The F Series Barrel Lock system is Brooks' standard design for utility locking devices. F Series Barrel Locks are interchangeable with standard locks from other manufacturers. Build your F Series Barrel Lock starting with prefix 850 and add features using the 4 digit options to the right. Complete F Series Barrel Locks will have a total of seven digits.

FSERIES BARREL LOCKS	STAINLESS STEEL	HARDENED STEEL	OPTIONS
850	4700	9900	Barrel Lock without cap
850	4720	9910	Barrel Lock with cap
850	4708	9708	Barrel Lock with weather seal
850	4728	9718	Barrel Lock with cap & weather seal
850	4701	9901	Barrel Lock with hole drilled in head

F SERIES KEYS	STYLES
8610005	Sliding finger style
8612000	Collet style
8612500	Repairable collet style
1525520	Replacement cartridge

## G Series



**DESCRIPTION**  
The high security G Series is available in three non-interchangeable barrel lock combinations. The G Series key offers a unique plunger design that is virtually pick proof. Complete G Series Barrel Locks will have a total of seven digits.

G SERIES BARREL LOCKS	STAINLESS STEEL	HARDENED STEEL	OPTIONS
G1 852	4700	9700	Barrel Lock without cap
G2 853			
G3 (SS ONLY) 854	4720	9710	Barrel Lock with cap

G SERIES KEYS	STANDARD KEY	REPAIRABLE KEY	REPAIRABLE KEY CARTRIDGE
G1	8615000	8615500	1527520
G2	8616000	8616500	1527522
G3	8617000	8617500	1527523

## S-1000 Series



**DESCRIPTION**  
The high security S-1000 Series offers progressive levels of security coupled with geographic exclusivity. Its unique design permits a one key system opening S-1000 locks and all competitive standard design barrel locks. Build your S-1000 Barrel Locks starting with prefix 855 and add features using the four digit options to the right.

S-1000 SERIES BARREL LOCKS	STAINLESS STEEL	HARDENED STEEL	OPTIONS
855	4700	9700	Barrel Lock without cap
855	4720	9720	Barrel Lock with stainless steel cap
855	4701	N/A	Barrel Lock with seal hole
855	N/A	9710	Barrel Lock with hardened steel cap

S-1000 SERIES KEYS	STYLES
8619000	Standard style
8619500	Repairable style
1529715	Replacement cartridge

# BARREL LOCK ACCESSORIES

## Barrel Lock Cleaning Tool



**DESCRIPTION**  
Clear bugs, dirt and debris from the Barrel Lock body. Comes complete with key ring attached.

**MODEL**  
1502920

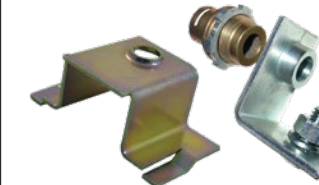
## Barrel Lock Puller



**DESCRIPTION**  
The clamshell style Barrel Lock puller grips tightly around the head of a Barrel Lock to remove troubled locks. Using an Allen wrench, tighten the end of the puller around the head of the lock. Then use a wrench to turn the nut on the rear of the puller, which pulls the lock out of device in which it was installed.

**MODEL**  
8990000

## Barrel Lock Guard



**DESCRIPTION**  
A case-hardened and plated steel device mounted on the cover of a ringless meter box to protect the Barrel Lock from attack. Used with an angle bracket mounted inside the box. Two holes must be drilled to install these devices. Mounting templates are available to help position drill holes.

**MODELS**  
8650500 Barrel Lock Guard w/seal adapter  
8651500 Waterproof Barrel Lock Guard w/seal adapter  
8781000 Barrel Lock Guard with Flangeless Bracket  
9100000 Flangeless Bracket  
8690000 Flange-Type Bracket

## Plastic Cap for Seal Adapter



**DESCRIPTION**  
Deters tampering of Barrel Locks within a locking device and protects Barrel Locks from environmental debris. The slotted cap allows for a seal to be placed through the adapter and cap.

**MODELS**  
9750000-1 Red Cap  
9750000-9 Gold Cap  
9750500-27 Clear Cap

## Weather Cap



**DESCRIPTION**  
This plastic cap is placed on the head of the barrel lock keeping dirt and insects out of the barrel lock keyway.

**MODEL**  
683000-1

# LOCKING RINGS

Field meter workers and revenue protection professionals need sealing and locking rings that install easily and remain secure long after they have left the site. Brooks' innovations include products for "no tools needed" installation, keyless or keyed variations and medium security products that include enhanced durability and security for the AMI era.

## Slip-Lock Sealing Ring



### DESCRIPTION

Constructed of a stainless band, the Slip-Lock Sealing Ring provides an easy, tool-free installation. The front wall of the band is smaller than the back, putting pressure on the meter cover when tightened. Ring properly marked with forward orientation.

### MODEL

10-9001

## Redi-Ring



### DESCRIPTION

This ring is a one-piece, front entry, locking ring with steel or plastic seal adapter. Available in stainless steel, it can be used on most individual residential sockets and multiple apartment meter panels.

### MODELS

- 8470100 Stainless Steel with Zinc Seal Adapter
- 8470300 Stainless Steel with Portable Plastic Seal Adapter
- 8470400 Stainless Steel with Permanent Plastic Seal Adapter

## Handi-Ring® Screw-Type Sealing Ring



### DESCRIPTION

No tools are needed to install Brooks' patented stainless steel Handi-Ring, engineered for strength, long life and easy installation. This screw-type sealing ring is equipped with exclusive, corrosion resistant, easy-grip tabs and a finger-grip screw that allows hand-tightening in most installations. Four large sealing slots for tamper-evident seals.

### MODELS

- 10-9090
- 8042040 Handi-Ring with Padlock Clip

## Click Ring



### DESCRIPTION

The Click Ring features a built-in Barrel Lock for keyless installation. This one-piece, stainless steel, high security ring is ideal for AMI deployment or contractor installation, as it can be installed without a key. Ring design promotes utility security and key control.

	CLICK RING		BUILT-IN BARREL LOCK			
			F	G1	G2	G3
Stainless Steel	8730019	8730046	8730040	8730040	8730055	

# LOCKING ACCESSORIES

Brooks' locking accessories reflect our commitment to every aspect of your security program, including ringless socket security. Our locking portfolio extends beyond conventional barrel locks and locking rings and includes products like our one-time use keyless padlocks (KP Lock) and our universal-mount Quick Lock II for securing ringless meter enclosures where tampering is suspected. Our full selection of accessories ensures that each element of your locking systems is resilient and reliable.

## S-Shaped T-Slot Adapter



### DESCRIPTION

Designed to secure ringless meter sockets. The seal adapter is pressed into the adapter to protect the Barrel Lock and provide a sealing point. The heavy-duty slotted end cap provides added security. Made of case-hardened steel with yellow chromate plating. Used in conjunction with a Barrel Lock, sold separately.

### MODELS

- 8750000 S-Shaped T-Slot Adapter w/Seal Adapter
- 8720000 Heavy-Duty Slotted End Cap
- 8751000 Adapter and Cap

## Brooks KP Keyless Padlock



### DESCRIPTION

Designed to prevent unauthorized entry into energized cabinets, the Brooks KP Keyless Padlock is a simple, cost-effective answer to revenue protection. The KP Keyless Padlock installs easily without tools. The 3/16" hasp slides into the body, allowing adjustable vertical clearance. It secures tightly and cannot be broken without a cutting tool. Made from corrosion resistant zinc alloy.

### MODEL

2-1046

# LOCKING ACCESSORIES (CONTINUED)

## Quick Pin Lock



### DESCRIPTION

The Quick Pin Lock is used to secure ringless or gang style meter sockets. The device uses a machined pin which inserts into the chamber of a brass padlock. The pin and lock secure a hardened steel bracket that holds the cover of the meter socket in place. The Quick Pin Lock uses the same mounting bracket and screw as the Quick Lock II. Bottom and side mount units available.

MOUNTINGOPTION	PREFIX	3/8" PIN	
		NO PADLOCK	W/PADLOCK
SIDE	882	0000	0001
BOTTOM	882	1000	1001
UNIVERSAL	882	2000	2001

Build your Quick Pin Lock starting with prefix 882 and add features using the 4 digit options above. EXAMPLE: 8821001 Bottom Mount, 3/8" Pin with Padlock.

## Quick Lock II™



### DESCRIPTION

Featuring a steel bracket and a screw design that offers a firmer anchor on the wall of the meter socket. The Quick Lock II is easy to install, with no holes to punch in the enclosure and no tools required for installation. It accepts all standard length Barrel Locks and is available with side, bottom or universal-mount brackets. Quick Locks are available with pre-loaded Barrel Locks. Contact Brooks for additional model numbers.

MOUNTING OPTION	LOCK BODY	W/PLASTIC SEAL ADAPTER	W/STEEL SEAL ADAPTER
SIDE	Steel	8898400	8898700
	Zinc	8901400	8901700
BOTTOM	Steel	8900400	8900700
	Zinc	8902400	8902700
UNIVERSAL	Steel	8903400	8903700
	Zinc	8904400	8904700

# GAS AND WATER LOCKING

When it comes to securing gas and water meters, Brooks has extensive experience in serving your needs. Our gas and water sealing and locking portfolio provides durable and secure solutions that range in application from basic theft deterrence to sophisticated, higher security prevention devices. You'll find connection nut seals that reveal initial tampering attempts, high security locks such as the Wing-Type Valve Protector that secure common tampering points, and locking pipe plugs that safely and securely disable the service as a last resort in theft prevention.

## Connection Nut Lock



### DESCRIPTION

A case-hardened steel device that completely encloses the connection nut and is secured with a Barrel Lock. Cadmium plated for corrosion resistance.

### MODELS

- 8320010 10LT, 3/4" insert with Barrel Lock F and end cap
- 8320020 20LT, 1" insert with Barrel Lock F and end cap
- 8329010 10LT, 3/4" insert, without Barrel Lock
- 8329020 20LT, 1" insert, without Barrel Lock

## Locking Pipe Plug



### DESCRIPTION

This cadmium plated, case-hardened steel plug prevents unauthorized use of service during meter or service piping change-outs. Plug is secured with a Barrel Lock, sold separately. Usage with one of a variety of plastic seals to indicate tampering is recommended.

GAS PLUGS	THREAD SIZE	WATER PLUGS	THREAD SIZE
8431100	1/2"	8423100	1"
8432100	3/4"	8424100	1 1/4"
8433100	1"		

## Water Union Nut Lock



### DESCRIPTION

The Water Union Nut Lock is a three component, case-hardened, plated steel assembly that encapsulates water union nuts. Assembly secured with a Barrel Lock, sold separately.

### MODELS

- 8400075 3/4" insert, without Barrel Lock
- 8400100 1" insert, without Barrel Lock

## Connection Nut Seal



### DESCRIPTION

Made of molded poly plastic, its mated halves install around the connection nut without tools. Access to the nut can only be gained by breaking the seal, providing an obvious sign of tampering. Sold as a two-piece assembly in 5LT (5/8"), 10LT (3/4"), 20LT (1"), 25LT (1 1/2") and 30LT (2") sizes.

### MODELS

- 83600XX-X Transparent
- 83610XX-X Solid

NOTE: XX denotes LT size. X denotes color.





After a century and a half of helping utilities meet their meter connection requirements, Brooks Utility Products is the premier choice among utilities seeking specialized utility products. Our broad utility industry experience, engineering expertise, specialized manufacturing capabilities and proven quality control make us the ideal partner for developing new components and applications. Whether you require products and components from our extensive inventory or a custom-designed solution, Brooks Utility Products has the answers.



43045 West 9 Mile Rd.  
Novi, MI 48375  
1.888.687.3008  
brooksutility.com  
linkedin.com/company/BrooksUPG  
2026 Version

